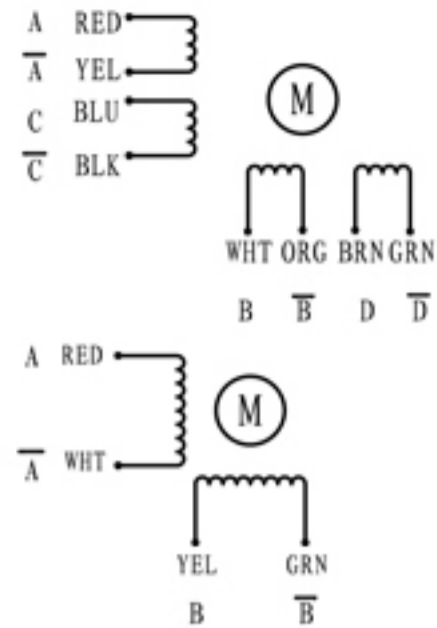


# 86mm 2 Phase Hybrid Stepping Motor

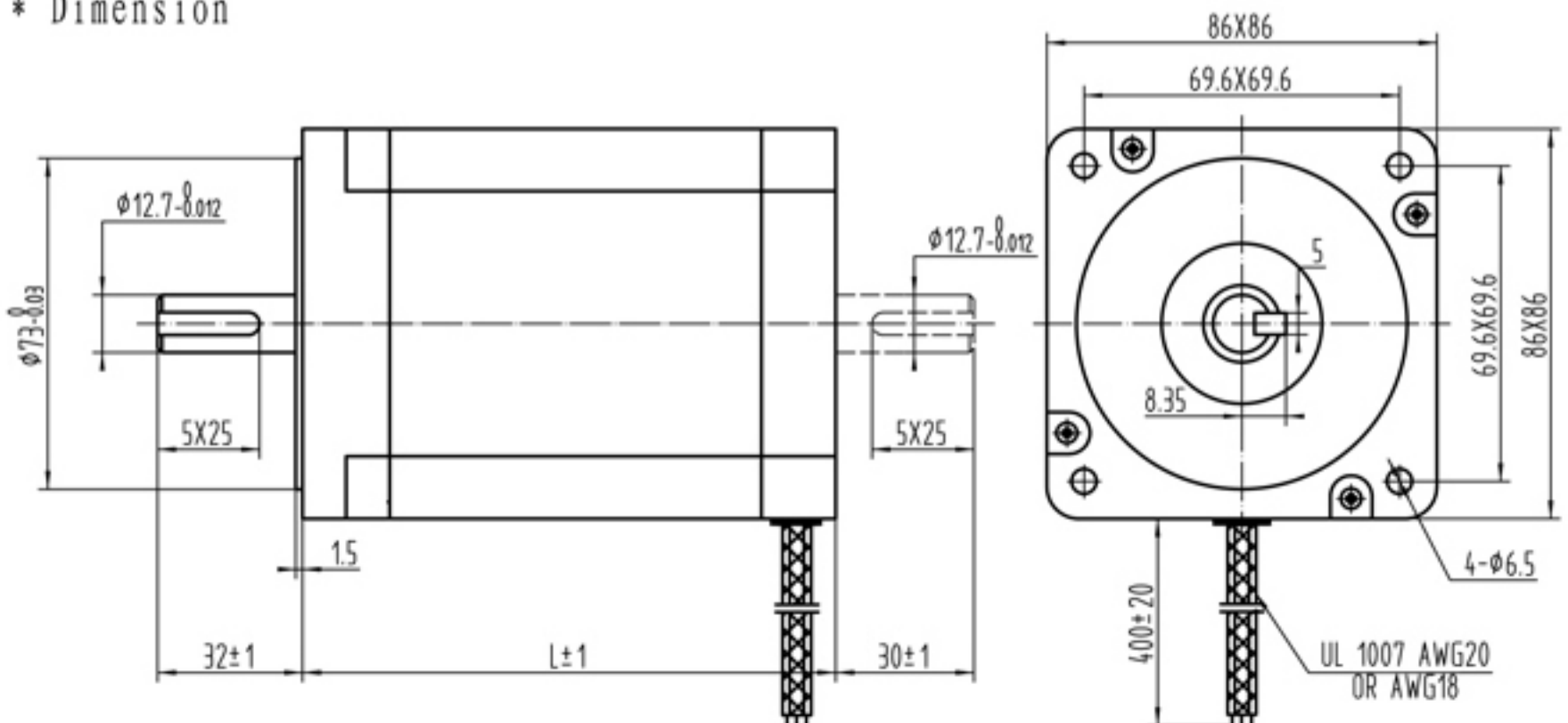
Step Angle	----	1.8°
Step Angle Accuracy	----	±5% (full step, no load)
Resistance Accuracy	----	±10%
Inductance Accuracy	----	±20%
Insulation Resistance	----	500VDC 100MΩMin
Dielectric Strength	----	500VAC 1 minute
Ambient Temperature	----	-20°C-- +50°C
Temperature Rise	----	80°C Max(rated current)
Shaft Axial Play	----	0.08mm Max(450g load)
Shaft Radial Play	----	0.02mm Max(450g load)
Max Axial Force	----	80N
Max Radial Force	----	220N(20mm from the flange)
Insulation Class	----	B



## \* Specifications

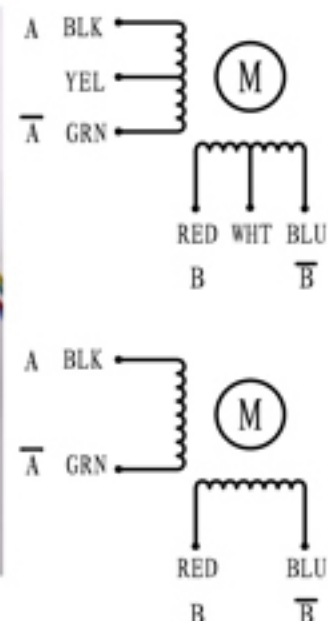
Model	Motor Codes	Voltage /Phase	Current /Phase	Resistance /Phase	Inductance /Phase	Holding Torque	NO. of Leads	Rotor Inertia	Weight	Detent Torque	Length
Units		V	A	Ω	mH	N. m		g. cm <sup>2</sup>	Kg	Kg-cm	mm
SY86STH65-5004A	141065000	1.65	5.0	0.3	1.6	3.4	4	1000	1.8	0.8	65
SY86STH65-2808A	141065001	1.68	2.8	0.6	1.6	3.4	8				
SY86STH80-4204A	141080000	2.15	4.2	0.51	4.7	4.6	4	1400	2.4	1.2	80
SY86STH80-4208A	141080001	3.36	4.2	0.8	3.8	4.6	8				
SY86STH118-6004A	141118008						4	2700	3.8	2.4	118
SY86STH118-4208A	141118001	5.33	4.2	1.27	6.4	9.0	8				
SY86STH156-6204A	141156000	4.96	6.2	0.8	9.0	13.5	4	4000	5.4	0.36	156
SY86STH156-4208A	141156001	6.72	4.2	1.6	9.0	13.5	8				

## \* Dimension



# 86mm 2 Phase Hybrid Stepping Motor

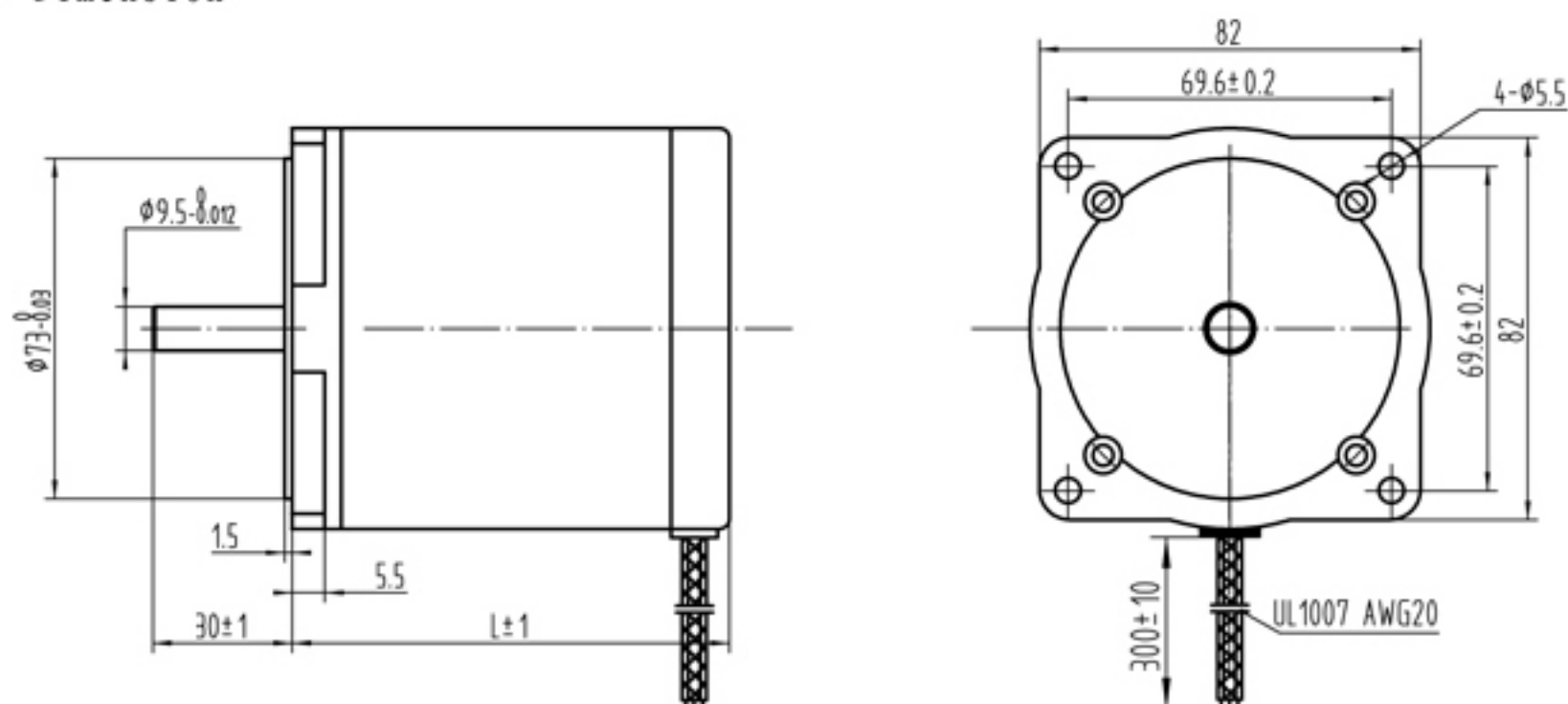
Step Angle	----	1.8°
Step Angle Accuracy	----	±5% (full step, no load)
Resistance Accuracy	----	±10%
Inductance Accuracy	----	±20%
Insulation Resistance	----	500VDC 100MΩMin
Dielectric Strength	----	500VAC 1 minute
Ambient Temperature	----	-20°C-- +50°C
Temperature Rise	----	80°C Max(rated current)
Shaft Axial Play	----	0.08mm Max(450g load)
Shaft Radial Play	----	0.02mm Max(450g load)
Max Axial Force	----	80N
Max Radial Force	----	220N(20mm from the flange)
Insulation Class	----	B



## \* Specifications

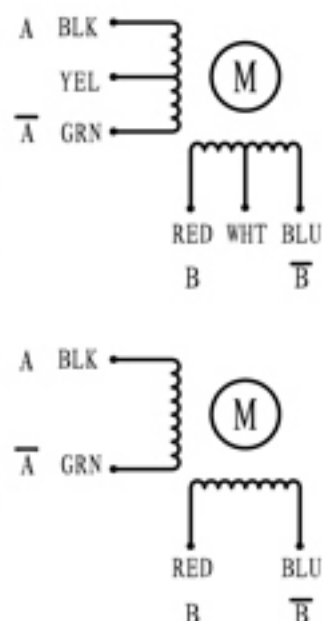
Model	Motor Codes	Voltage /Phase	Current /Phase	Resistance /Phase	Inductance /Phase	Holding Torque	NO. of Leads	Rotor Inertia	Weight	Detent Torque	Length
Units		V	A	Ω	mH	N. m		g. cm <sup>2</sup>	Kg	Kg-cm	mm
SY86ST62-4506A	130062000	2.34	4.5	0.52	1.3	1.6	6	560	1.5	0.8	61
SY86ST62-5904A	130062003	2.12	5.9	0.36	1.73	2.0	4				
SY86ST94-4006A	130094000	2.84	4.0	0.71	3.35	3.6	6	1100	2.6	2.4	93
SY86ST94-5604A	130094003	2.1	5.6	0.36	2.5	4.5	4				
SY86ST134-6706A	130134000	2.68	6.7	0.4	1.77	6.0	6	1800	3.6	3.6	133
SY86ST134-5604A	130134003	3.14	5.6	0.56	6.45	7.5	4				

## \* Dimension



# 86mm 2 Phase Hybrid Stepping Motor

Step Angle	----	1.8°
Step Angle Accuracy	----	±5% (full step, no load)
Resistance Accuracy	----	±10%
Inductance Accuracy	----	±20%
Insulation Resistance	----	500VDC 100MΩMin
Dielectric Strength	----	500VAC 1 minute
Ambient Temperature	----	-20℃-- +50℃
Temperature Rise	----	80℃ Max(rated current)
Shaft Axial Play	----	0.08mm Max(450g load)
Shaft Radial Play	----	0.02mm Max(450g load)
Max Axial Force	----	80N
Max Radial Force	----	220N(20mm from the flange)
Insulation Class	----	B



## \* Specifications

Model	Motor Codes	Voltage /Phase	Current /Phase	Resistance /Phase	Inductance /Phase	Holding Torque	NO. of Leads	Rotor Inertia	Weight	Detent Torque	Length
Units		V	A	Ω	mH	N. m		g. cm <sup>2</sup>	Kg	Kg-cm	mm
SYD86ST74-4004A	140074000	1.96	4.0	0.49	3.5	3.6	4	1200	2.5	0.8	74
SYD86ST74-2008A	140074001	7.8	2.0	3.9	11.45	3.6	8				
SYD86ST99-3008A	140099000	10.5	3	3.5	15	5	8	2200	3.3	1.8	99
SYD86ST117-4004A	140117004	4.2	4	1.05	7.5	8	4	2700	3.9	2.5	117
SYD86ST129-3008A	140129003	11.34	3	3.78	19.5	8	8	4000	4.1	3.2	129
SYD86ST129-4008A	140129002	5.2	4.0	1.3	6.35	10.0	8				

## \* Dimension

