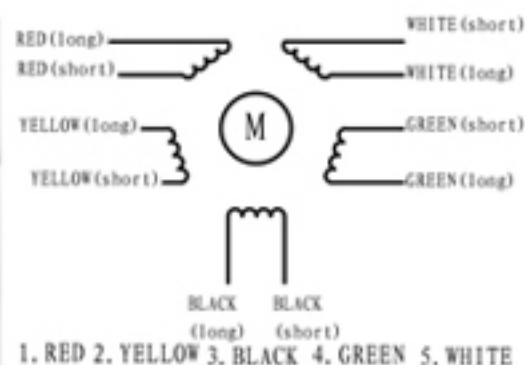
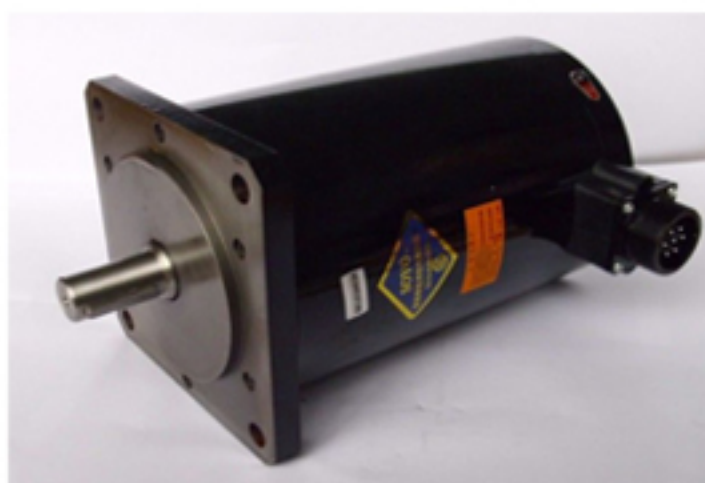


# 130mm 5 Phase Hybrid Stepping Motor

Step angle	----	0.72°
Step Angle Accuracy	----	±5% (full step, no load)
Resistance Accuracy	----	±10%
Inductance Accuracy	----	±20%
Insulation Resistance	----	500VDC 100MΩMin
Dielectric Strength	----	1000VAC 1 minute
Ambient Temperature	----	-20℃-- +50℃
Temperature Rise	----	80℃ Max(rated current)
Shaft Axial Play	----	0.3mm Max(450g load)
Shaft Radial Play	----	0.025mm Max(450g load)
Max Axial Force	----	60N
Max Radial Force	----	220N(20mm from the flange)
Insulation Class	----	B



## \* Specifications

Model	Motor Codes	Voltage /Phase	Current /Phase	Resistance /Phase	Inductance /Phase	Holding Torque	NO. Leads	Rotor Inertia	Weight	Length
Units		V	A	Ω	mH	N. m		Kg. cm <sup>2</sup>	Kg	mm
SY1305P199-5010A	270199000	220	5.0	0.45	5.2	26	FIVE HOLE SOCKET	30	16	199
SY1305P226-5010A	270226000	220	5.0	0.5	6.5	36	FIVE HOLE SOCKET	35	18	226
SY1305P282-5010A	270282000	220	5.0	0.5	7.2	50	FIVE HOLE SOCKET	45.5	22	282

## \* Dimension

