

感应电动机 INDUCTION MOTOR

6W

□60mm



规格 / 连续额定 SPECS / CONTINUOUS RATING

型号Model 导线型 Lead Wire Type	机型Type 圆轴型 Round Shaft	输出功率 Output power W	电压 Voltage V	频率 Frequency Hz	电流 Current A	启动转矩 Starting Torque mN.m	额定转矩 Rated Torque mN.m	额定转速 Rated Speed r/min	电容器容量 Capacitor μ F
2IK6GN-A	2IK6A-A	6	1ph100	50	0.240	55	48	1200	3.5
				60	0.250	50	40	1450	
2IK6GN-E	2IK6A-E	6	1ph110 1ph120	60	0.160	40	40	1450	2
					0.180				
2IK6GN-C	2IK6A-C	6	1ph220 1ph230	50	0.130	50	48	1200	0.8
					0.110		40		
2IK6GN-H	2IK6A-H	6	1ph220 1ph230	60	0.140	55	40	1450	-
					0.120				
2IK6GN-S	2IK6A-S	6	3ph220	50	0.076	85	48	1200	-
				60	0.065	70	40	1450	

● 各种安全规格以电动机铭牌上的型号取得认定。

● When the motor is approved under various safety standards, the model name on the nameplate is the approved model name.

种类 TYPE

● 电动机 MOTOR

机型 Type	型号 Model	
	齿轮轴型 Pinion Shaft	圆轴型 Round Shaft
导线型 Lead Wire Type	2IK6GN-A	2IK6A-A
	2IK6GN-E	2IK6A-E
	2IK6GN-C	2IK6A-C
	2IK6GN-H	2IK6A-H
	2IK6GN-S	2IK6A-S

● 平行轴减速器(另售) PARALLEL SHAFT GEARHEAD (SOLD SEPARATELY)

减速器种类 Gearhead Type	减速器型号 Gearhead Model	减速比 Gear Ratio
长寿命·低噪音 Long Life · Low Noise	2GN□K	3、3.6、5、6、7.5、9、 12.5、15、18、25、30、 36、50、60、75、90、 100、120、150、180、200
	2GN10XK(中间减速器Mid-gearbox)	

● 减速器型号的□中为减速比的数值

● Enter the gear ratio in the box (□) within the model name

■ 装有减速器时的容许转矩 ALLOWABLE TORQUE WHEN BEING WITH GEARHEAD

- 减速器·中间减速器另售
- 减速器型号的□中为减速比的数值。
- □色表示与电动机同一方向运转，其他则为相反方向。
- 转速是以电动机的同步转速 (50Hz: 1500r/min、60Hz: 1800r/min) 为基准除以减速比而算出来的数值。实际转速将随负载大小变化而比所示数值减少 2%~20%左右。
- 希望以大于下表的减速比进行进一步减速时，可在电动机与减速器之间安装减速比为10的中间减速器。这时的容许转矩为3N·m
- Gearhead and mid-gearbox can be sold separately.
- Enter the gear ratio in the box (□) within the model name.
- The colored background □ indicates the same rotating direction of the motor while the rotating direction of others are opposite.
- The speed is calculated by dividing the motor's synchronous speed (50Hz: 1500r/min、60Hz: 1800r/min) by the gear ratio. The actual speed is 2%~20% less than the displayed value, depending on the size of the load.
- To reduce the speed beyond the gear ratio in the table, attach a mid-gearbox (gear ratio: 10) between the gearhead and motor. In that case, the permissible torque is 3N·m.

容许力矩单位 Allowance Torque Unit: 上段 Upside (N.m) / 下段 Belowside (kgf.cm)

机型Type 电动机/减速器 Motor/Gearhead	减速比Gear Ratio	容许力矩																					
		3	3.6	5	6	7.5	9	12.5	15	18	25	30	36	50	60	75	90	100	120	150	180	200	
2IK6GN-A 2IK6GN-E 2IK6GN-C 2IK6GN-H 2IK6GN-S	2GN□K	50Hz	500	417	300	250	200	166	120	100	83	60	50	41	30	25	20	16	15	12.5	10	8.3	7.5
		60Hz	600	500	360	300	240	200	144	120	100	72	60	50	36	30	24	20	18	15	12	10	9
		50Hz	0.12	0.14	0.19	0.23	0.29	0.35	0.49	0.58	0.70	0.88	1.1	1.3	1.6	1.9	2.4	2.9	3	3	3	3	3
		60Hz	0.10	0.12	0.16	0.19	0.24	0.29	0.41	0.49	0.58	0.73	0.88	1.1	1.3	1.6	2.0	2.4	2.6	3	3	3	3
			1.02	1.22	1.63	1.94	2.45	2.96	4.18	5.0	5.92	7.45	8.98	11.2	13.3	16.3	20.4	24.5	26.5	30	30	30	30

■ 容许悬挂负载·容许轴向负载 PERMISSIBLE OVERHUNG LOAD AND THRUST LOAD

电动机 (圆轴型) → P217 Motor (Round Shaft) → P217
 减速器 → P217 Gearhead → P217

■ 减速器的容许负载惯性惯量 J PERMISSIBLE LOAD INERTIA J FOR GEARHEAD

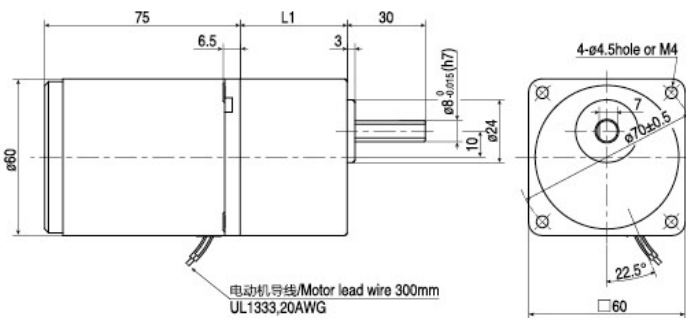
→ P218

■ 外形图 (单位 mm) DIMENSIONS (Unit mm)

减速器附有安装用螺丝
 Mounting screws are included with gearhead.

● 导线型 Lead wiring Type

重量 Weight: 电动机 Motor 0.75kg 减速器 Gearhead 0.4kg



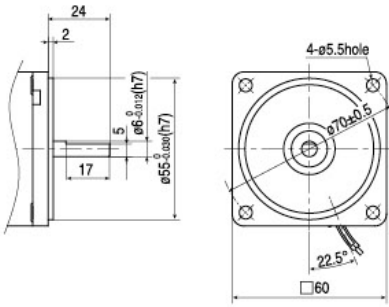
电动机型号 Motor Model	减速器型号 Gearhead Model	减速比 Gear Ratio	L1
2IK6GN-A 2IK6GN-E 2IK6GN-C 2IK6GN-H 2IK6GN-S	2GN□K	3~18	32
		25~200	41

- 减速器型号的□中为减速比的数值
- Enter the gear ratio in the box (□) within the model name

● 圆轴型的转轴部分 Shaft Section of Round Shaft Type

除重量及轴部外, 电动机外形与齿轮轴相同

Excluding weight and the shaft section motor shape are the same as those of the pinion shaft type

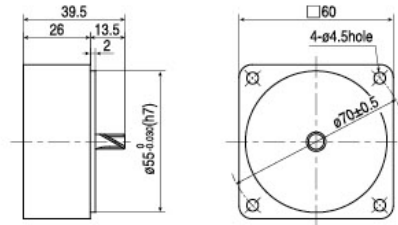


● 中间减速器 Mid-gearbox

可安装在GN齿轮轴型上

Can be connected to GN pinion 2GN10XK

重量 Weight: 0.24kg

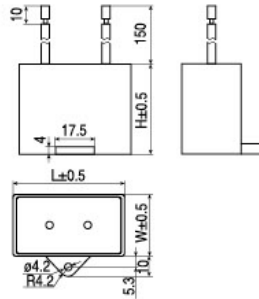


● 电容器外形尺寸 Formal Dimension of Capacitor

型号 Model		电容器型号 Capacitor Model	L	W	H
齿轮轴型 Pinion Shaft	圆轴型 Round Shaft				
2IK6GN-A	2IK6A-A	ZD35CFAUL	36	11	22
2IK6GN-E	2IK6A-E	ZD20CFAUL	36	11	20
2IK6GN-C	2IK6A-C	ZD08CFAUL	36	11	20

● 常规电容器出线为引线, 也可根据客户要求配置插片式187#

● Note: Conventional capacitor is a lead wire type. Inserted 187# is optional



■ 连接图 CONNECTION DIAGRAMS

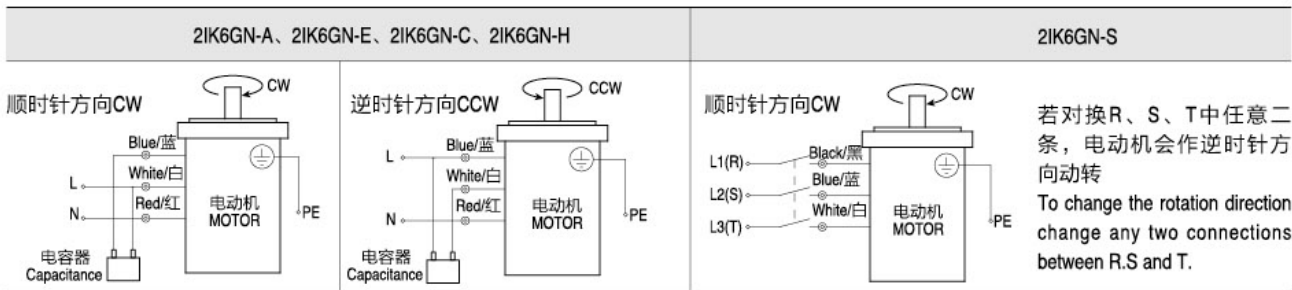
● 运转方向指从电动机轴看来的方向。CW表示顺时针方向, CCW表示逆时针方向。

● 表中所记型号为齿轮轴型, 圆轴型亦同。

● The direction of motor rotation is as viewed from the shaft end of motor.

CW represents the clockwise direction, while CCW represents the counterclockwise direction.

● Name indicated in the list is pinion shaft type, also valid for the equivalent round.



● 请注意 Note:

● 单相电动机运转方向的转换应在电动机停止后进行。

● 若在电动机运转时转换运转方向, 可能发生无法转换运转方向或须费时较久的情况。

● Change the direction of single-phase motor rotation only after bring the motor to a stop.

● If an attempt is made to change the direction of rotation while the motor is rotating, motor may ignore reversing command or change its direction of rotation after some delay.