

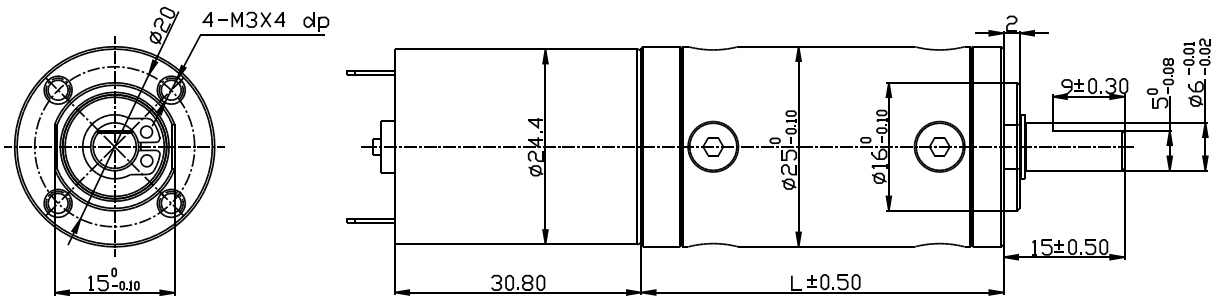
# PG25M370



## Typical applications:

Peristaltic pump, Micro CNC equipment, ATM bank automatic system, Card conveyors, Auto shutter, Binding machine, Mimeograph, Office equipment, Household appliances, Automatic actuator.

### Appearance size



### Gearbox data

| Number of stages          | 1 stages reduction | 2 stages reduction | 3 stages reduction | 4stages reduction        | 5stages reduction                   |
|---------------------------|--------------------|--------------------|--------------------|--------------------------|-------------------------------------|
| Reduction ratio           | 4, 4.75            | 16, 19, 22.5       | 64, 76, 90, 107,   | 256, 304, 361, 428, 509, | 1024, 1216, 1444, 1715, 2036, 2418, |
| Gearbox length "L" mm     | 30                 | 35.1               | 40.2               | 45.3                     | 50.4                                |
| Max. Running torque       | 2.0Kgf · cm        | 3.0Kgf · cm        | 4.0Kgf · cm        | 6.0Kgf · cm              | 10Kgf · cm                          |
| Max. Gear breaking torque | 6.0Kgf · cm        | 9.0Kgf · cm        | 12Kgf · cm         | 18Kgf · cm               | 30Kgf · cm                          |
| Gearing efficiency        | 90%                | 81%                | 73%                | 65%                      | 59%                                 |

### Motor data

| Motor name   | Rated Volt. V | No load |       | Load torque |       |         |              | Stall torque |         |
|--------------|---------------|---------|-------|-------------|-------|---------|--------------|--------------|---------|
|              |               | Current | Speed | Current     | Speed | Torque  | Output power | Torque       | Current |
|              |               | mA      | r/min | mA          | r/min | gf · cm | W            | gf · cm      | mA      |
| RF-370063000 | 6             | ≤15     | 3000  | ≤100        | 2200  | 15      | 0.33         | 60           | 600     |
| RF-370064500 | 6             | ≤25     | 4500  | ≤270        | 3300  | 24      | 0.8          | 90           | 1200    |
| RF-370066000 | 6             | ≤40     | 6000  | ≤500        | 4500  | 30      | 1.4          | 120          | 1900    |
| RF-370123000 | 12            | ≤15     | 3000  | ≤55         | 2200  | 15      | 0.33         | 60           | 280     |
| RF-370126000 | 12            | ≤20     | 6000  | ≤250        | 4500  | 30      | 1.4          | 120          | 1200    |
| RF-370246000 | 24            | ≤30     | 6000  | ≤130        | 4500  | 30      | 1.4          | 120          | 550     |

1. Please refer to motor RF-370 for the motor graph.

2. After connecting motor and gearbox which is named gearmotor the output torque: motor torque X reduction ratio X gearing efficiency; output speed: motor speed / reduction ratio.

### NOTE:

- Gearmotor named methods: e.g. PG25M370123000-90K Motor please refer to the motor data RF-370123000. Gearbox please refer to gearbox data reduction ratio 90. Related to gearmotor output speed and torque please refer to motor data.
- Motor can be installed with magnetic encoder.
- Standard output shaft after reducing: F6.0mm. Other sizes of the output shaft can make as client request.
- Chart only for reference, products shall prevail the entity.