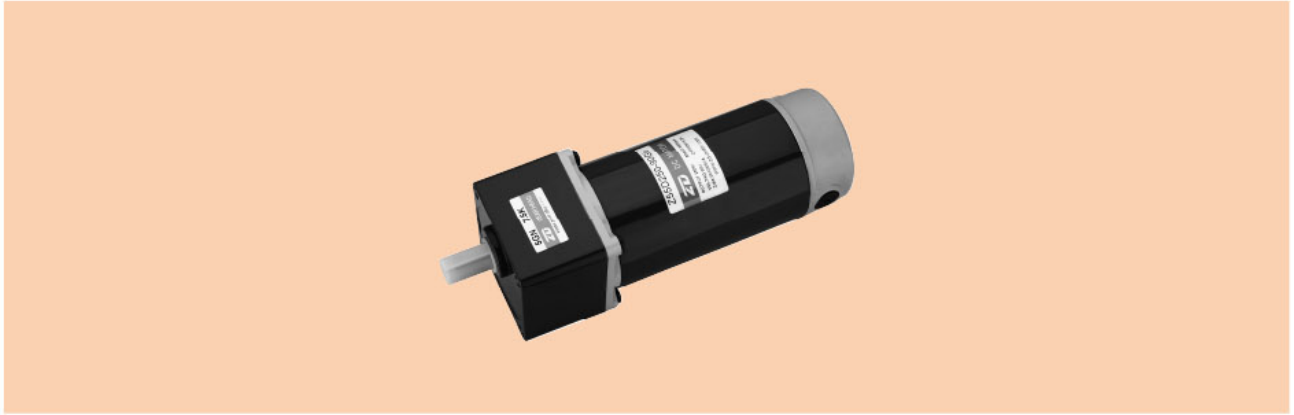


# 直流电动机 DC MOTORS

## 250W

□ 90mm



### 电机性能参数 MOTOR PERFORMANCE PARAMETERS

型号 Model	电压 Voltage V	输出功率 Out put Power W	空载参数No-load Parameters		负载参数Load Parameters			电刷寿命 Brush Life H	电机重量 Motr Weight Kg
			转速Speed r/min	电流Current A	转速Speed r/min	力矩Torque mN.m	电流Current A		
Z55D250-24□	24	250	3400	3.0 Max	3000	796	16.0	2000	3.2
Z55D250-90□	90	250	3300	1.2 Max	3000	796	4.2	2000	3.2
Z55D250-220□	220	250	3300	0.9 Max	3000	796	2.2	2000	3.2

- 电机电压、功率及转速可在配件尺寸等条件下根据客户要求定制。
- Motor voltage, power and speed will be customized accrding to his requestment under the allowed circumstance of adoptable dimension.

### 种类 TYPE

#### ● 电动机 MOTOR

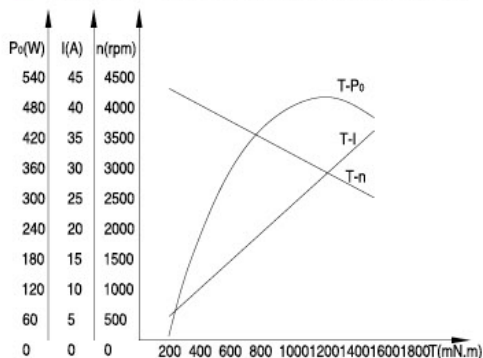
机型 Type	型号 Model	
	齿轮轴型 Pinion Shaft	圆轴型 Round Shaft
导线型 Lead Wire Type	Z55D250-24GU	Z5D250-24A
	Z55D250-90GU	Z5D250-90A
	Z55D250-220GU	Z5D250-220A

#### ● 平行轴减速器(另售) PARALLEL SHAFT GEARHEAD (SOLD SEPARATELY)

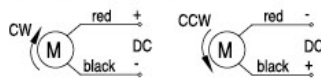
减速器种类 Gearhead Type	减速器型号 Gearhead Model	减速比 Gear Ratio
长寿命·低噪音 Long Life·Low Noise	5GU□K(B)	3、3.6、5、6、7.5、9、 12.5、15、18、25、30、 36、50、60、75、90、 100、120、150、180、200
	5GU10XK(中间减速器Mid-gearbox)	

- 减速器型号的□中为减速比的数值 ● Enter the gear ratio in the box (□) within the model name

#### ● 电机特性曲线 Characteristic Curve of Motor



#### ● 电机接线图 Wiring Diagram of Motor



- 标准引出线长度: 300mm±10, 型号: UL1015 规格: AWG14; 电机引出线长度, 型号在配件尺寸等条件允许的情况下可根据客户需求定制
- Standard length of lead wire: 300mm±10, model: UL1015 type: AWG14; lead wire length, model will be customised by dient requestmant under allowed circumstance of adoptable dimension

## ■ 装有减速器时的容许转矩

### ALLOWABLE TORQUE WHEN BEING WITH GEARHEAD

- 减速器·中间减速器另售
- 减速器型号的口□中为减速比的数值。
- 色表示与电动机同一方向运转，其他则为相反方向。
- 转速是以电动机的额定转速为基准除以减速比而算出来的数值。实际转速将随负载大小变化而比所示数值减少2%~20%左右。
- 希望以大于下表的减速比进行进一步减速时，可在电动机与减速器之间安装减速比为10的中间减速器。这时的容许转矩为20N·m
- Gearhead and mid-gearbox can be sold separately.
- Enter the gear ratio in the box (□) within the model name.
- Indicates the same rotating direction of the motor while the others rotate in the opposite direction.
- The speed is calculated by dividing the motor's synchronous speed by the gear ratio. The actual speed is 2%~20% less than the displayed value, depending on the size of the load.
- To reduce the speed beyond the gear ratio in the table, attach a mid-gearbox (gear ratio: 10) between the gearhead and motor. In that case, the permissible torque is 20N·m.

容许力矩单位 Allowance Torque Unit: 上段 Upside (N·m) / 下段 Belowside (kgf·cm)

机型Type	减速比Gear Ratio	3	3.6	5	6	7.5	9	12.5	15	18	25	30	36	50	60	75	90	100	120	150	180	200	
		转速Speed r/min	1000	833	600	500	400	333	240	200	166	120	100	83	60	50	40	33	30	25	20	16	15
Z55D250-24GU	5GU□K(B)	1.93	2.32	3.22	3.86	4.83	5.80	7.20	8.70	10.4	13.1	15.7	18.9	20.0	20.0	20.0	20.0	20.0	20.0	20.0	20.0	20.0	20.0
		19.7	23.6	32.8	39.4	49.3	59.2	74.1	88.9	99.1	133	160	192	200	200	200	200	200	200	200	200	200	200

## ■ 容许悬挂负载·容许轴向负载

### PERMISSIBLE OVERHUNG LOAD AND THRUST LOAD

电动机(圆轴型)→217页

Motor (Round Shaft)→P217

减速器→217页

Gearhead→P217

## ■ 减速器的容许负载惯性惯量J

### PERMISSIBLE LOAD INERTIA J FOR GEARHEAD

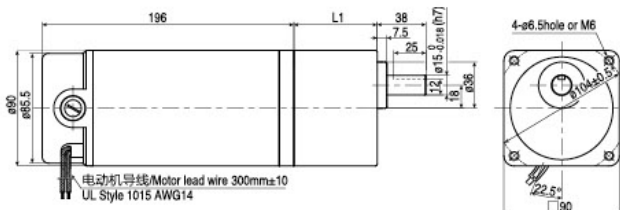
→218页→P218

## ■ 外形图(单位 mm) DIMENSIONS(Unit mm)

减速器附有安装用螺丝 Mounting screws are included with gearhead.

### ● 导线型 Lead wiring Type

重量 Weight: 电动机 Motor: 3.2kg 减速器 Gearhead 1.5kg



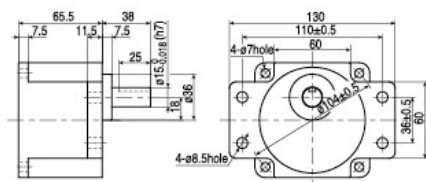
电动机型号 Motor Model	减速器型号 Gearhead Model	减速比 Gear Ratio	L1
Z55D250-24GU	5GU□K(B)	3~200	65.5
Z55D250-90GU			
Z55D250-220GU			

- 减速器型号的口□中为减速比的数值
- Enter the gear ratio in the box (□) within the model name

### ● 凸缘安装型减速器 Flange Mounting Reducer

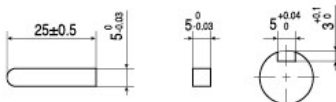
可安装在GU齿轮轴型上 Can be Mounted on GU Type gear shaft 5GU□K

重量 Weight: 1.5kg



### ● 键·键槽(减速器附件)

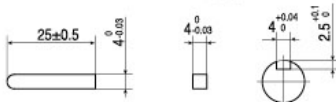
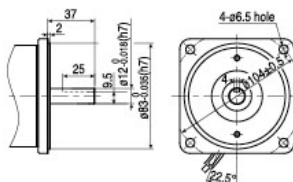
Key·keyway (The key is included with the gearhead)



### ● 圆轴型的转轴部分 Shaft Section of Round Shaft Type

除重量及轴部外,电动机外形与齿轴型相同

Excluding weight and the shaft section Motor shape are the same as those of the pinion shaft



### ● 中间减速器 Mid-gearbox

可安装在GU齿轮轴型上

Can be connected to GU pinion Shaft type 5GU10XK

重量 Weight: 0.65kg

