

低压无刷直流减速电机 LOW VOLTAGE BLDC MOTOR

200W

□90mm



电机性能参数 Motor performance parameters

型号 Model	电压 Voltage V	额定功率 Rated Power W	空载参数 No-load Parameters		负载参数 Load Parameters			电机寿命 Motor Life H	电机重量 Motor Weight kg
			转速 Speed RPM	电流 Current A	转速 Speed RPM	力矩 Torque N.m	电流 Current A		
ZSBLD200-24□	24	200	3500	MAX 0.80	3000	0.64	10.5	>5000	1.6
ZSBLD200-36□	36	200	3400	MAX 0.65	3000	0.64	7.0	>5000	1.6
ZSBLD200-48□	48	200	3300	MAX 0.45	3000	0.64	5.2	>5000	1.6

● 电机电压、功率及转速可在配件尺寸等条件下根据客户要求定制。

● Motor voltage, power and speed will be customized according to his request under the allowed circumstance of adoptable dimension.

种类 TYPE

● 电动机 MOTOR

机型 Type	型号 Model	
	齿轮轴型 Pinion Shaft	圆轴型 Round Shaft
导线型 Lead Wire	ZSBLD200-24GU	ZSBLD200-24A1
Type	ZSBLD200-36GU	ZSBLD200-36A1
	ZSBLD200-48GU	ZSBLD200-48A1

● 平行轴减速器(另售) PARALLEL SHAFT GEARHEAD (SOLD SEPARATELY)

减速器种类 Gearhead Type	减速器型号 Gearhead Model	减速比 Gear Ratio
长寿命·低噪音 Long Life · Low Noise	5GU□(B)	3、3.6、5、6、7.5、9、12.5、15、18、25、30、36、50、60、75、90、100、120、150、180、200
		5GU10XK (中间减速器 Mid-gearbox)

减速器型号的□中为减速比的数值 Enter the gear ratio in the box (□) within the model name

装有减速器时的容许转矩

Allowable torque when being with gearhead

● 减速器·中间减速器另售

● 减速器型号的□中为减速比的数值。

● 色表示与电动机同一方向运转，其他则为相反方向。

● 转速是以电动机的额定转速为基准除以减速比而算出来的数值。实际转速将随负载大小变化而比所示数值减少2%~20%左右。

● 希望以大于下表的减速比进行进一步减速时，可在电动机与减速器之间安装减速比为10的中间减速器。这时的容许转矩为20N·m

● Gearhead and mid-gearbox can be sold separately.

● Enter the gear ratio in the box (□) within the model name.

● 色 Indicates the same rotating direction of the motor while the others rotate in the opposite direction.

● The speed is calculated by dividing the motor's synchronous speed by the gear ratio. The actual speed is 2%~20% less than the displayed value, depending on the size of the load.

● To reduce the speed beyond the gear ratio in the table, attach a mid-gearbox (gear ratio: 10) between the gearhead and motor. In that case, the permissible torque is 20N·m.

容许力矩单位 Allowance Torque Unit: 上段 Upside (N.m) / 下段 Belowside (kgf.cm)

减速比 Gear Ratio	3	3.6	5	6	7.5	9	12.5	15	18	25	30	36	50	60	75	90	100	120	150	180	200
输出转速 r/min Out put shaft speed	1000	833	600	500	400	333	240	200	167	120	100	83	60	50	40	33	30	25	20	17	15
GU允许力矩 N.m Allowance Torque	1.55	1.86	2.58	3.09	3.87	4.64	5.81	6.97	8.37	10.51	12.61	15.13	20	20	20	20	20	20	20	20	20
GU允许力矩 kgf.cm Allowance Torque	15.79	18.94	7.89	9.47	39.47	47.36	59.28	71.14	85.37	107.2	128.6	154.4	204	204	204	204	204	204	204	204	204

● 容许悬挂负载·容许轴向负载

Permissible Overhung load and thrust load

电动机(圆轴型)→42页 Motor (Round Shaft) →P42

减速器→42页 Gearhead →P42

● 减速器的容许负载惯性量J

Permissible load inertia J for gearhead

→42页 →P42

外形图(单位 mm) Dimensions(Unit mm)

减速器附有安装用螺丝 Mounting screws are included with gearhead.

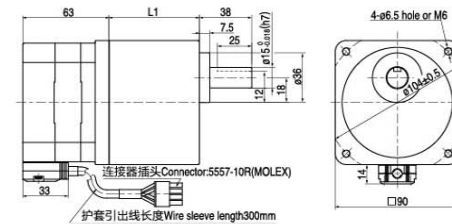
电动机型号 Motor Model	减速器型号 Gearhead type	速比 Gear Ratio	L尺寸 Dimension
ZSBLD200-24GU	5GU□(B)	3~200	65.5
ZSBLD200-36GU			
ZSBLD200-48GU			

● 减速器型号的□中为减速比的数值

● Enter the gear ratio in the box (□) within the model name

● 导线型 Lead wiring Type

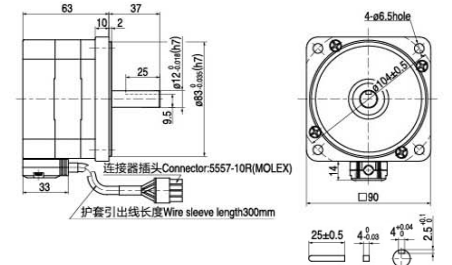
重量 Weight: 电动机 Motor: 1.6kg 减速器 Gearhead 1.5kg



● 圆轴型的转轴部分 Shaft Section of Round Shaft Type

除重量及轴部外，电动机外形与齿轴型相同

Excluding weight and the shaft section Motor shape are the same as those of the pinion shaft



● 接线插孔对应信号说明

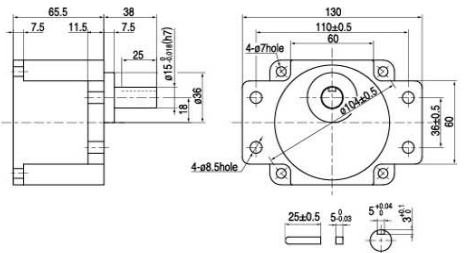
Wire plughole corresp-onding signal explanation

plughole	1	2	3	4
signal	U	W	Hv	Hu
plughole	5	6	7	8
signal	V	GND	Hw	Vcc

● 凸缘安装型减速器 Flange Mounting Reducer

可安装在GU齿轴轴型上 Can be Mounted on GU Type gear shaft 5GU□K

重量 Weight: 1.5kg



● 中间减速器 Mid-gearbox

可安装在GU齿轴轴型上

Can be connected to GU pinion Shaft type 5GU10XK

重量 Weight: 0.65kg

