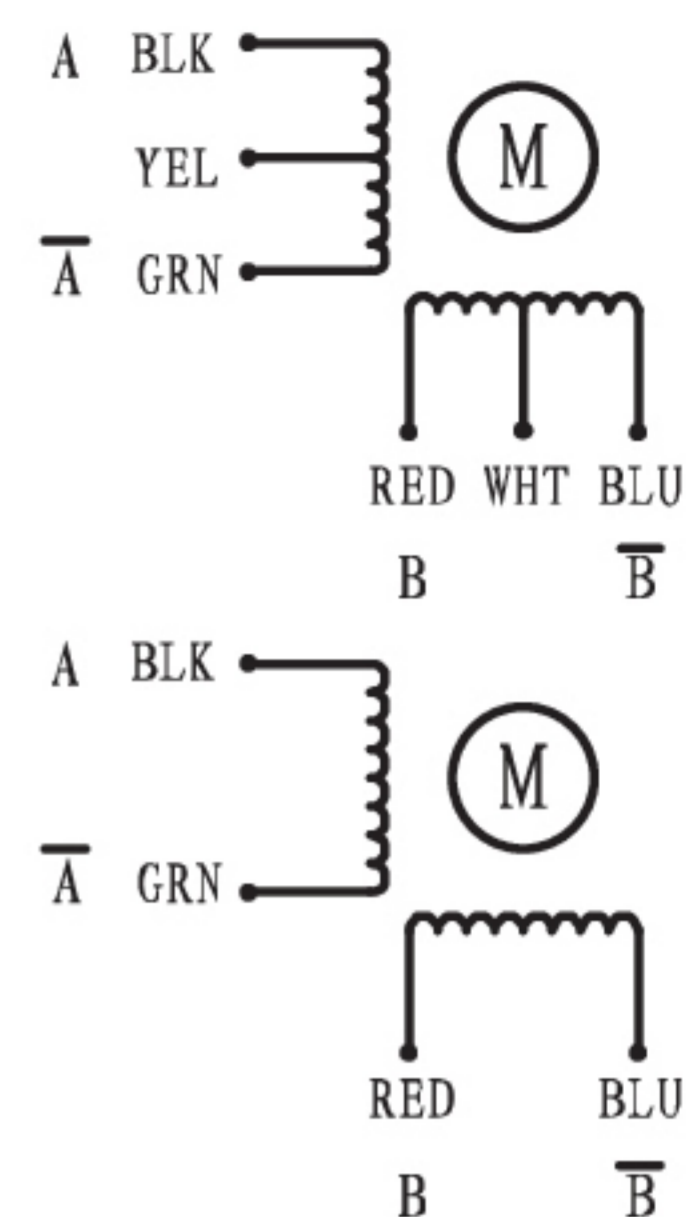


# 57mm 2 Phase Hybrid Stepping Motor

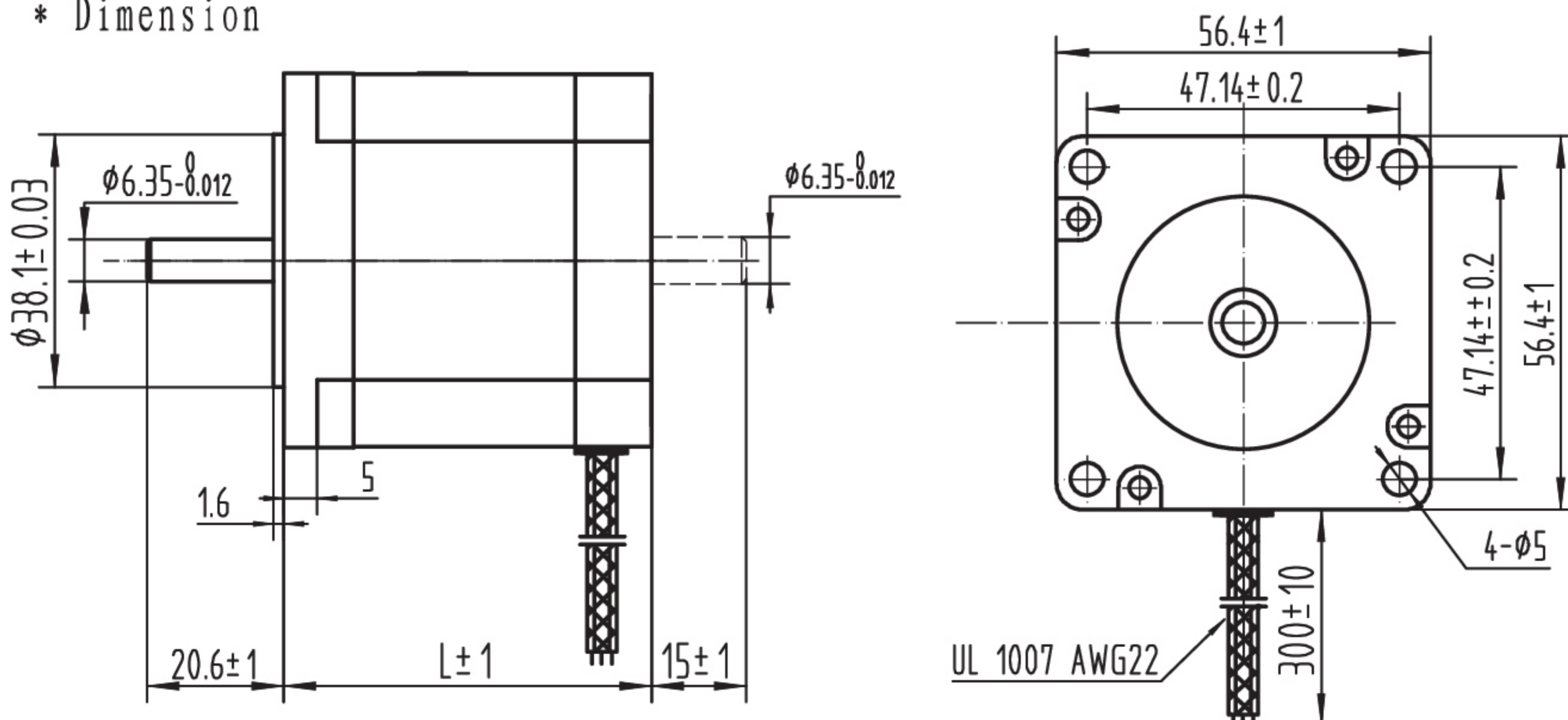
Step Angle	----	0.9°
Step Angle Accuracy	----	±5% (full step, no load)
Resistance Accuracy	----	±10%
Inductance Accuracy	----	±20%
Insulation Resistance	----	500VDC 100MΩMin
Dielectric Strength	----	500VAC 1 minute
Ambient Temperature	----	-20℃-- +50℃
Temperature Rise	----	80℃ Max (rated current)
Shaft Axial Play	----	0.08mm Max (450g load)
Shaft Radial Play	----	0.02mm Max (450g load)
Max Axial Force	----	15N
Max Radial Force	----	75N (20mm from the flange)
Insulation Class	----	B



## \* Specifications

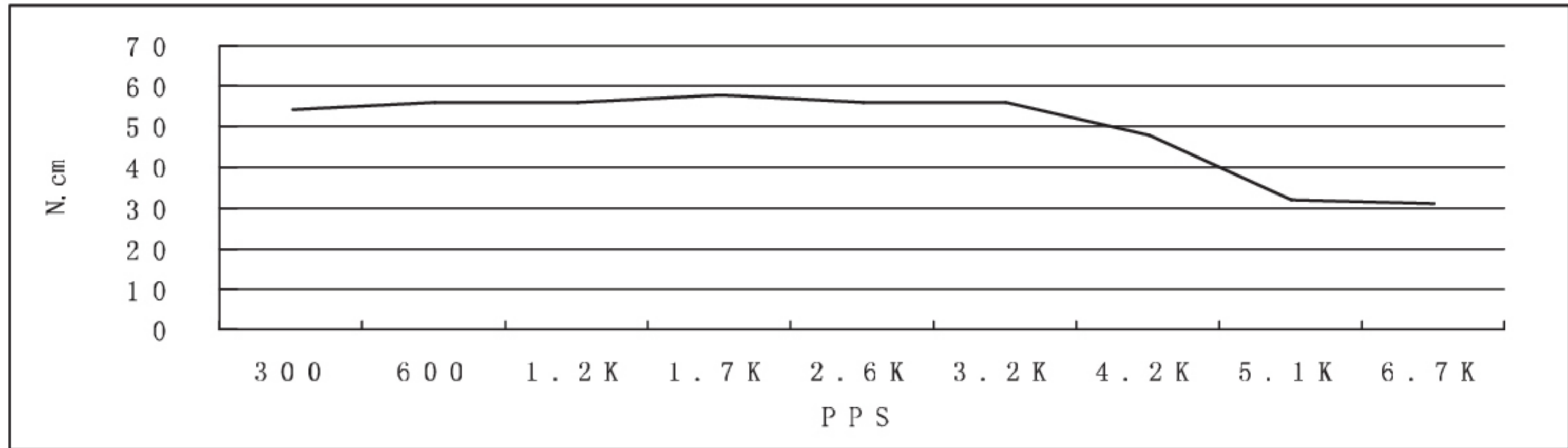
Model	Motor Codes	Voltage /Phase	Current /Phase	Resistance /Phase	Inductance /Phase	Holding Torque	NO. of Leads	Rotor Inertia	Weight	Detent Torque	Length
Units		V	A	Ω	mH	N. cm		g. cm <sup>2</sup>	Kg	Kg-cm	mm
SY57STH41-2006MA	070041001	2.8	2	1.4	2.2	39	6	120	0.45	0.21	41
SY57STH41-2804MA	070041003	2	2.8	0.7	2.2	55	4				
SY57STH56-2006MA	070056001	3.6	2	1.8	4.5	90	6	300	0.7	0.4	56
SY57STH56-2804MA	070056003	2.5	2.8	0.9	4.5	126	4				
SY57STH76-2006MA	070076001	4.5	2	2.25	5.6	135	6	480	1	0.68	76
SY57STH76-2804MA	070076003	3.2	2.8	1.13	5.6	189	4				

## \* Dimension

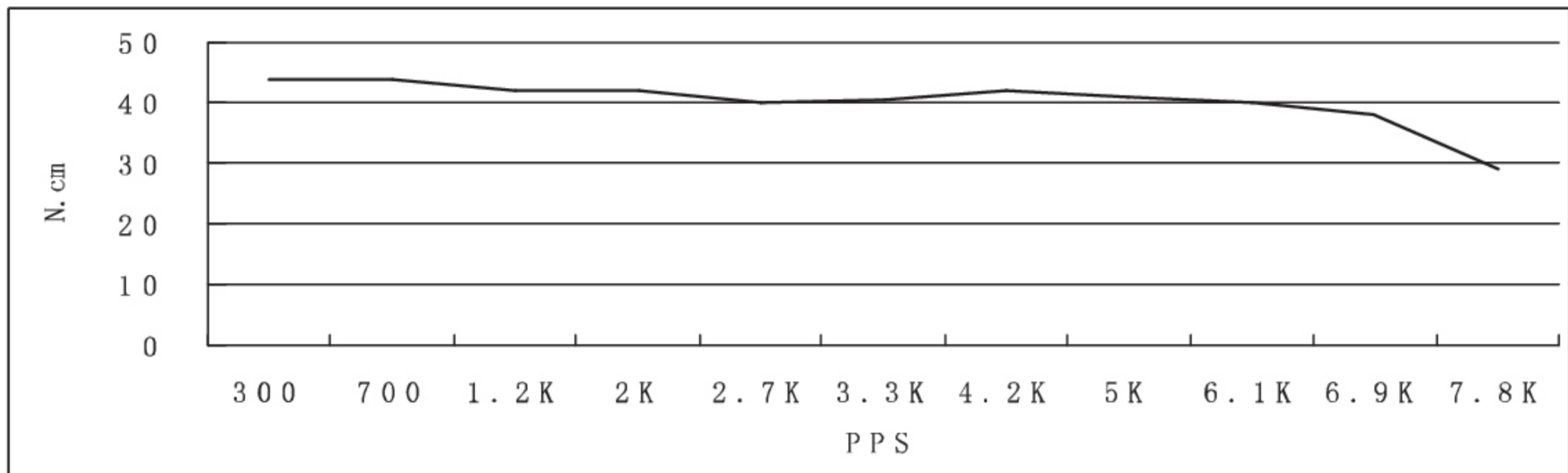


● Pull out torque curve:

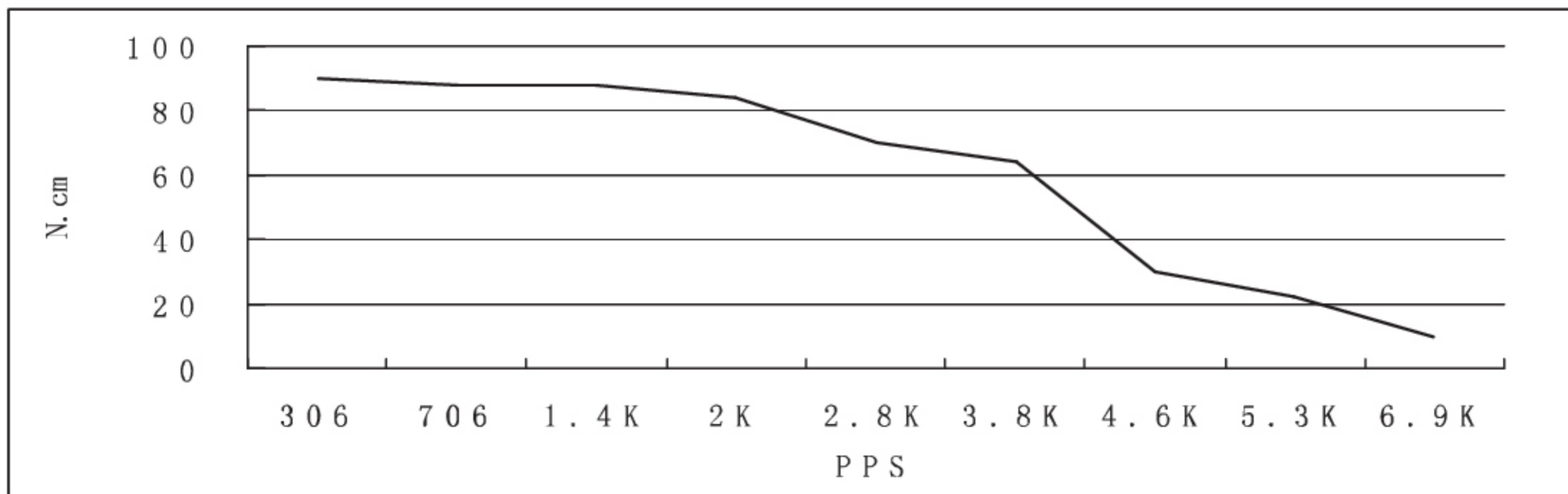
SY57STH41-2006MA Pull out torque curve:  
VOLTAGE: 30VDC, CONSTANT CURRENT: 2.0A, HALF STEP



SY57STH41-2804MA Pull out torque curve:  
VOLTAGE: 30VDC, CONSTANT CURRENT: 2.8A, HALF STEP



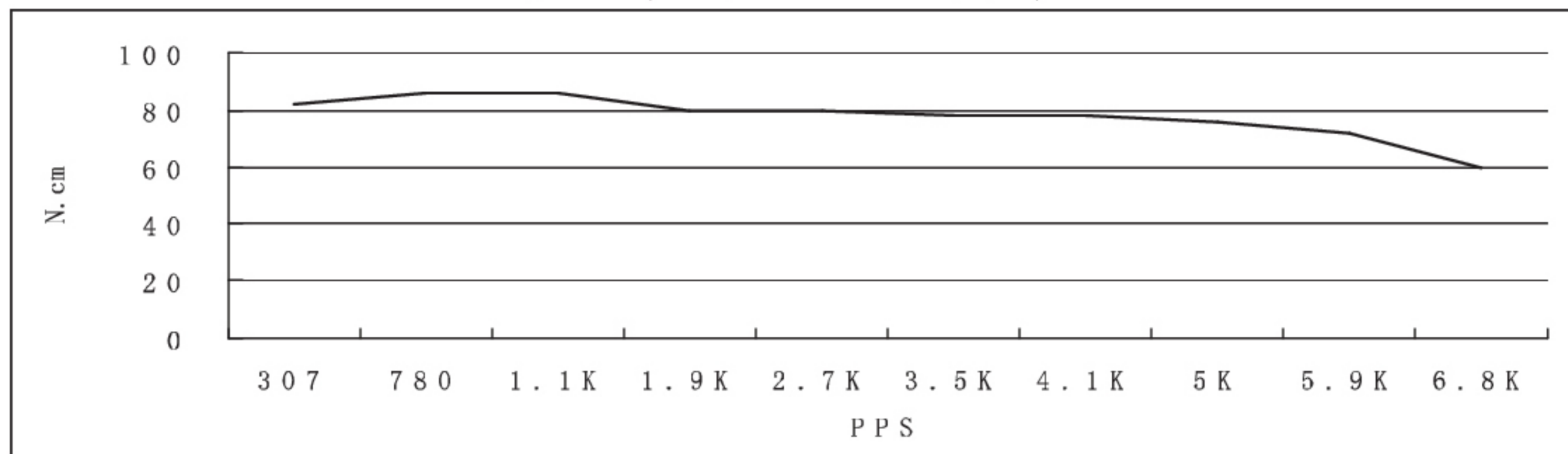
SY57STH56-2006MA Pull out torque curve:  
VOLTAGE: 30VDC, CONSTANT CURRENT: 2.0A, HALF STEP



● Pull out torque curve:

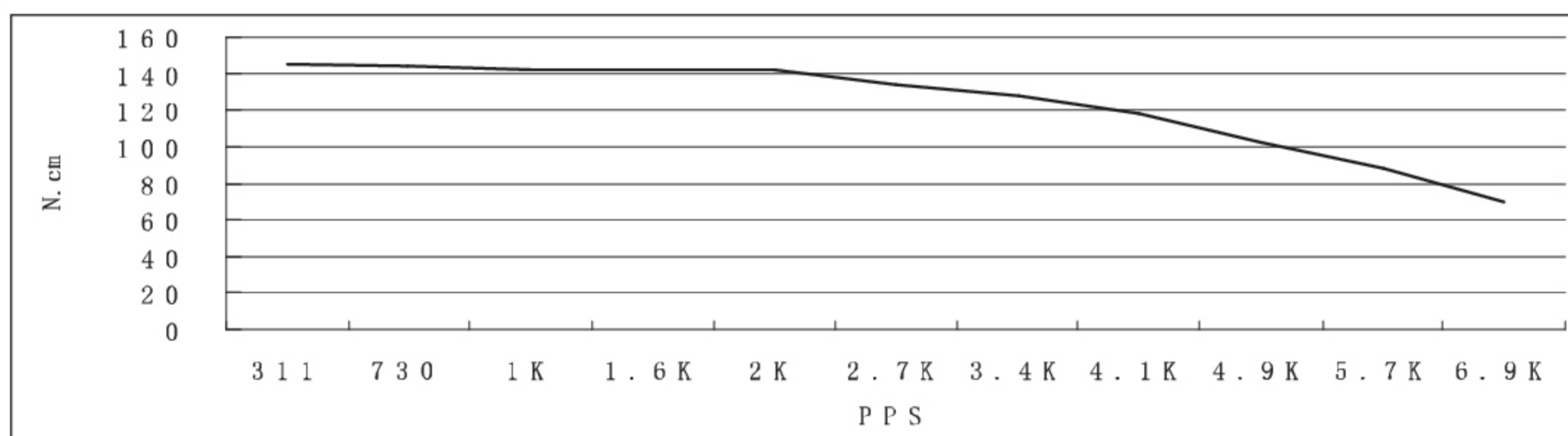
SY57STH51-2804MA Pull out torque curve:

VOLTAGE: 30VDC, CONSTANT CURRENT: 2.8A, HALF STEP



SY57STH76-2006MA Pull out torque curve:

VOLTAGE: 30VDC, CONSTANT CURRENT: 2.0A, HALF STEP



SY57STH76-2804MA Pull out torque curve:

VOLTAGE: 24VDC, CONSTANT CURRENT: 2.8A, HALF STEP

