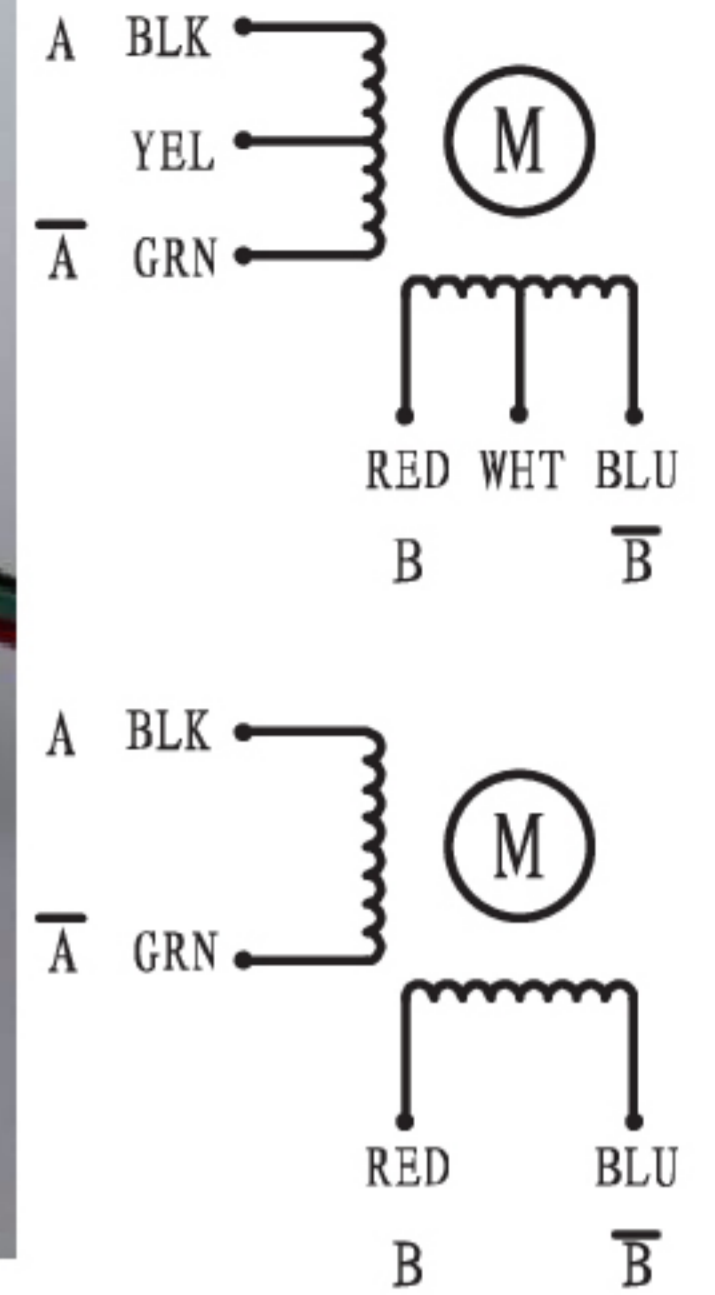
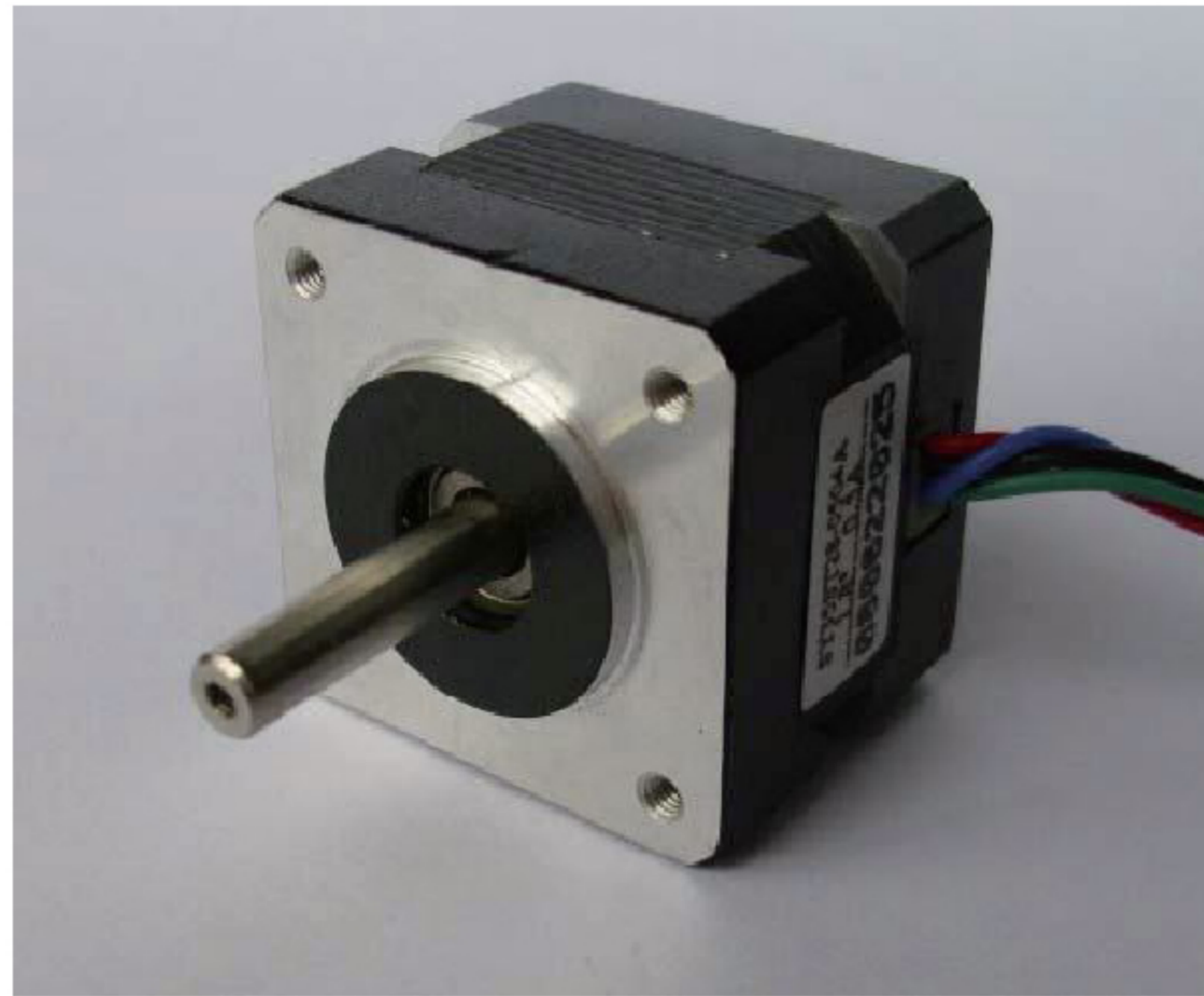


35mm 2 Phase Hybrid Stepping Motor

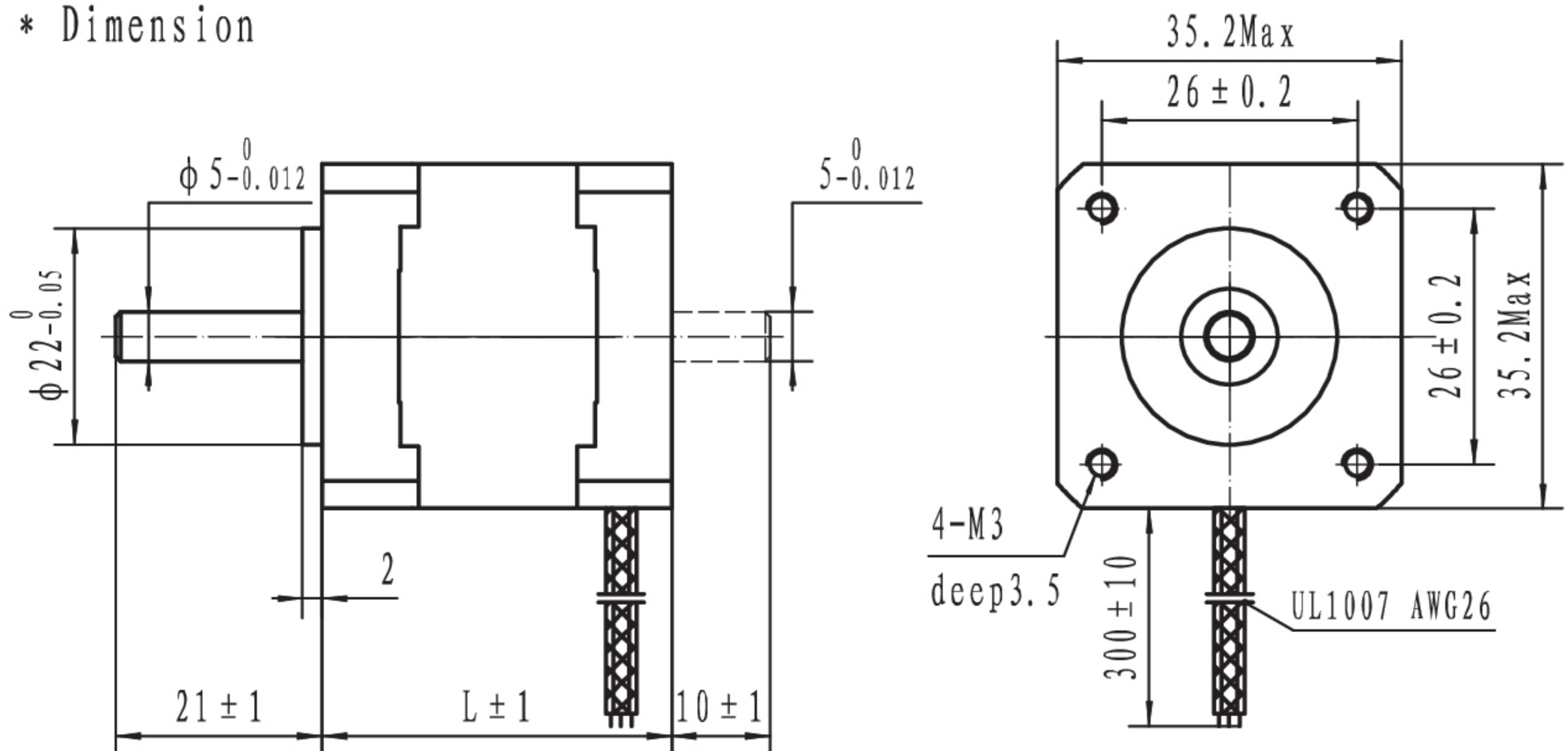
Step Angle	----	1.8°
Step Angle Accuracy	----	±5% (full step, no load)
Resistance Accuracy	----	±10%
Inductance Accuracy	----	±20%
Insulation Resistance	----	500VDC 100MΩMin
Dielectric Strength	----	500VAC 1 minute
Ambient Temperature	----	-20℃-- +50℃
Temperature Rise	----	80℃ Max(rated current)
Shaft Axial Play	----	0.08mm Max(450g load)
Shaft Radial Play	----	0.02mm Max(450g load)
Max Axial Force	----	10N
Max Radial Force	----	28N(20mm from the flange)
Insulation Class	----	B



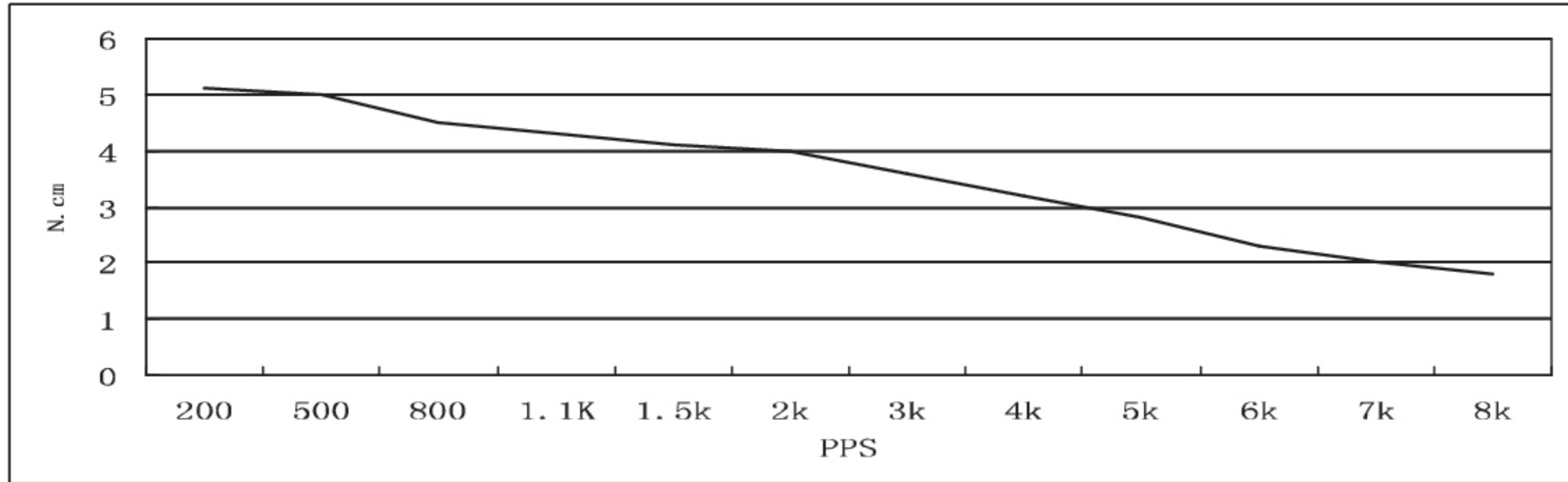
* Specifications

Model	Motor Codes	Voltage /Phase	Current /Phase	Resistance/ Phase	Inductance/ Phase	Holding Torque	NO. of Leads	Rotor Inertia	Weight	Length
Units		V	A	Ω	mH	N. cm		g. cm ²	Kg	mm
SY35ST26-0604A	030026000	3.24	0.6	5.4	3.5	5.1	4	10	0.11	26
SY35ST26-0284A	030026001	7.28	0.28	26	19.2	6.5	4	10	0.11	26
SY35ST28-0504A	030028000	10	0.5	20	13.5	10	4	10	0.13	28
SY35ST28-0406A	030028001	11.2	0.4	28	10	5	6	10	0.13	28
SY35ST36-0704A	030036000	1.4	0.7	2	2.9	9.2	4	14	0.18	36
SY35ST36-1004A	030036001	2.7	1.0	2.7	4.3	14	4	14	0.18	36

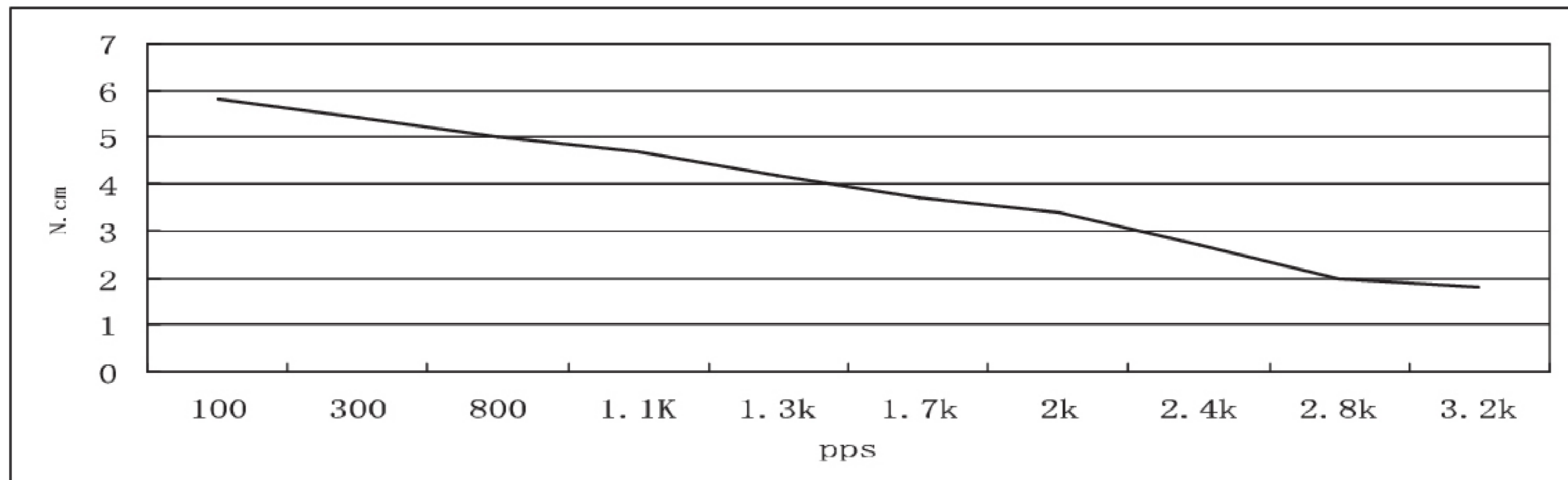
* Dimension



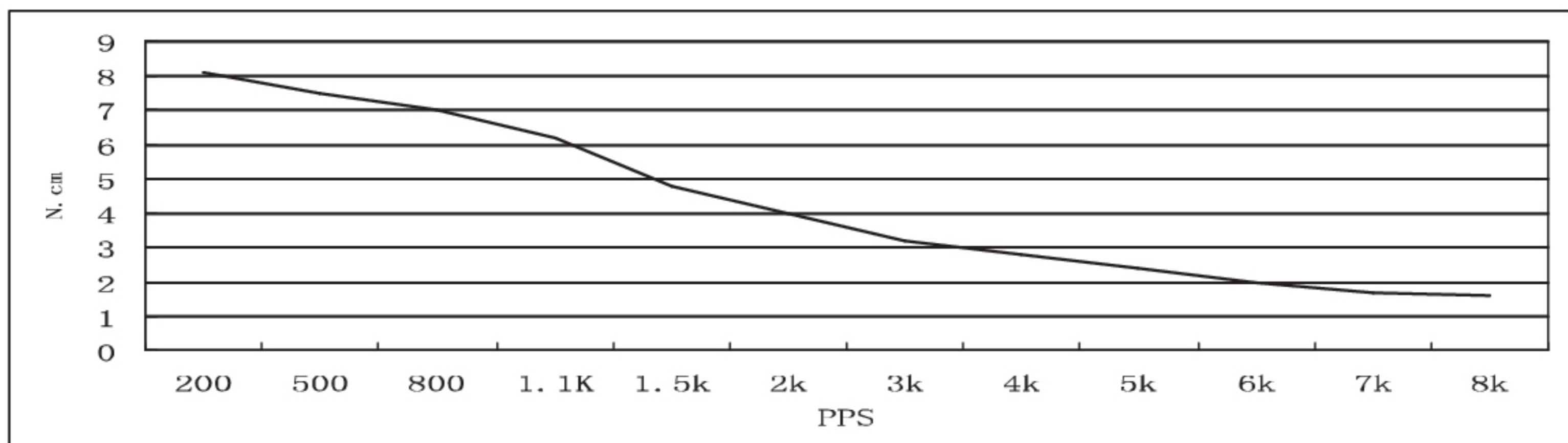
SY35STH26-0604A Pull out torque curve:
VOLTAGE: 24VDC, CONSTANT CURRENT: 0.6A, HALF STEP



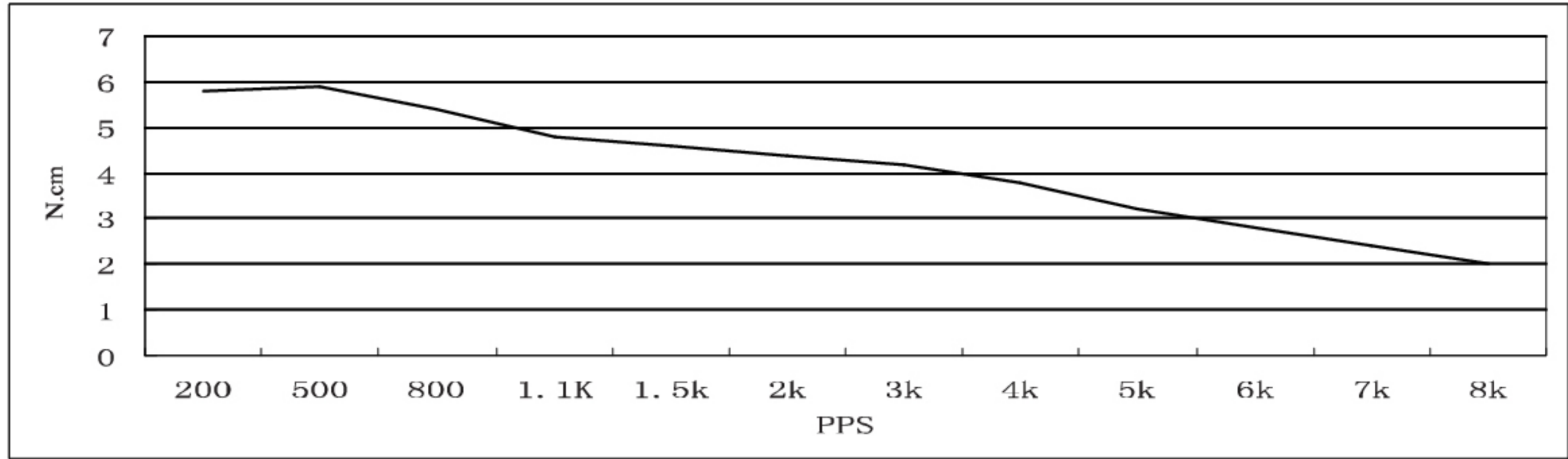
SY35STH26-0284A Pull out torque curve:
VOLTAGE: 24VDC, CONSTANT CURRENT: 0.28A, HALF STEP



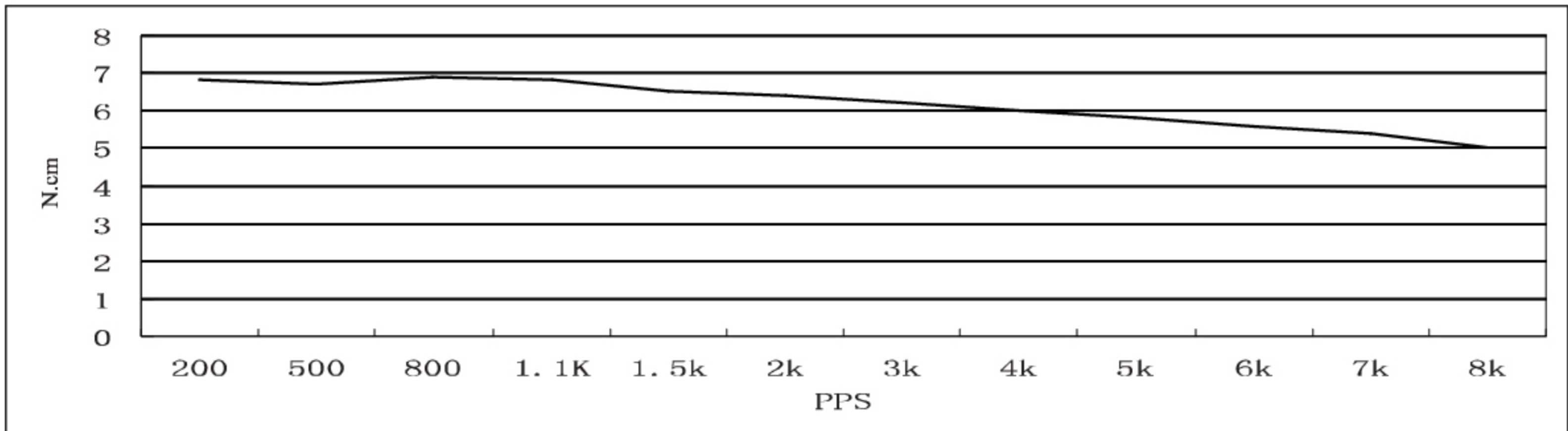
SY35STH28-0504A Pull out torque curve:
VOLTAGE: 24VDC, CONSTANT CURRENT: 0.5A, HALF STEP



SY35STH26-0406A Pull out torque curve:
VOLTAGE: 24VDC, CONSTANT CURRENT: 0.4A, HALF STEP



SY35STH36-0704A Pull out torque curve:
VOLTAGE: 24VDC, CONSTANT CURRENT: 0.7A, HALF STEP



SY35STH36-1004A Pull out torque curve:
VOLTAGE: 24VDC, CONSTANT CURRENT: 1.0A, HALF STEP

