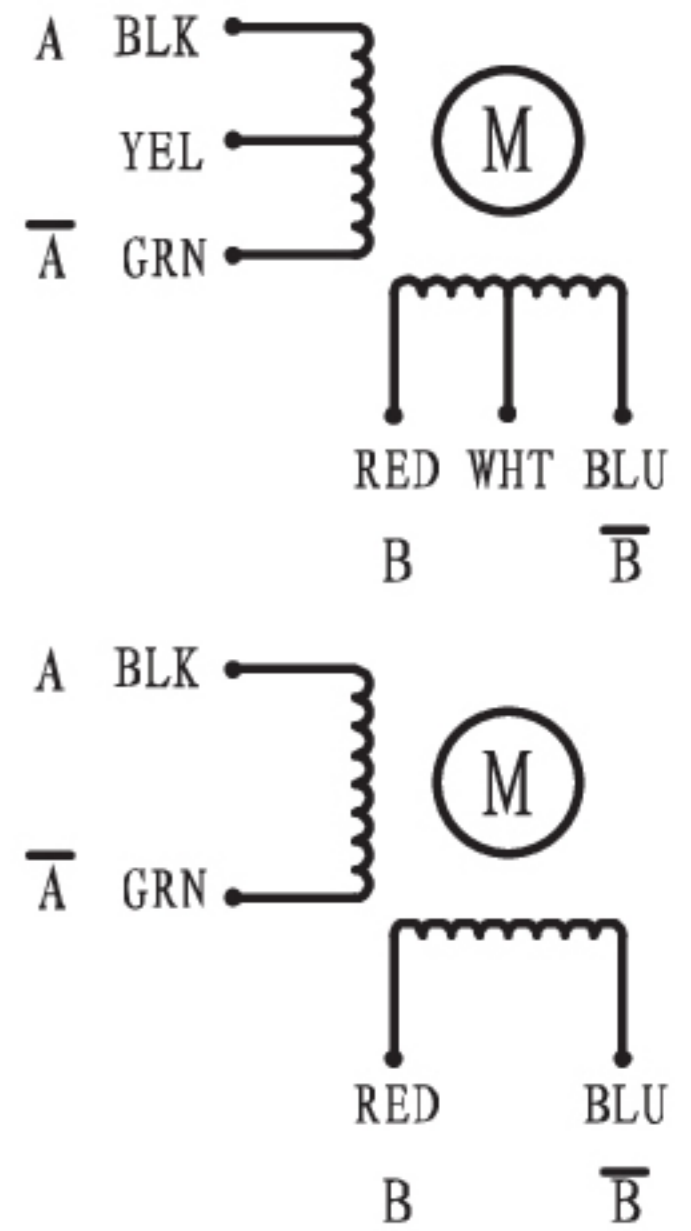


28mm 2 Phase Hybrid Stepping Motor

Stepper Motor

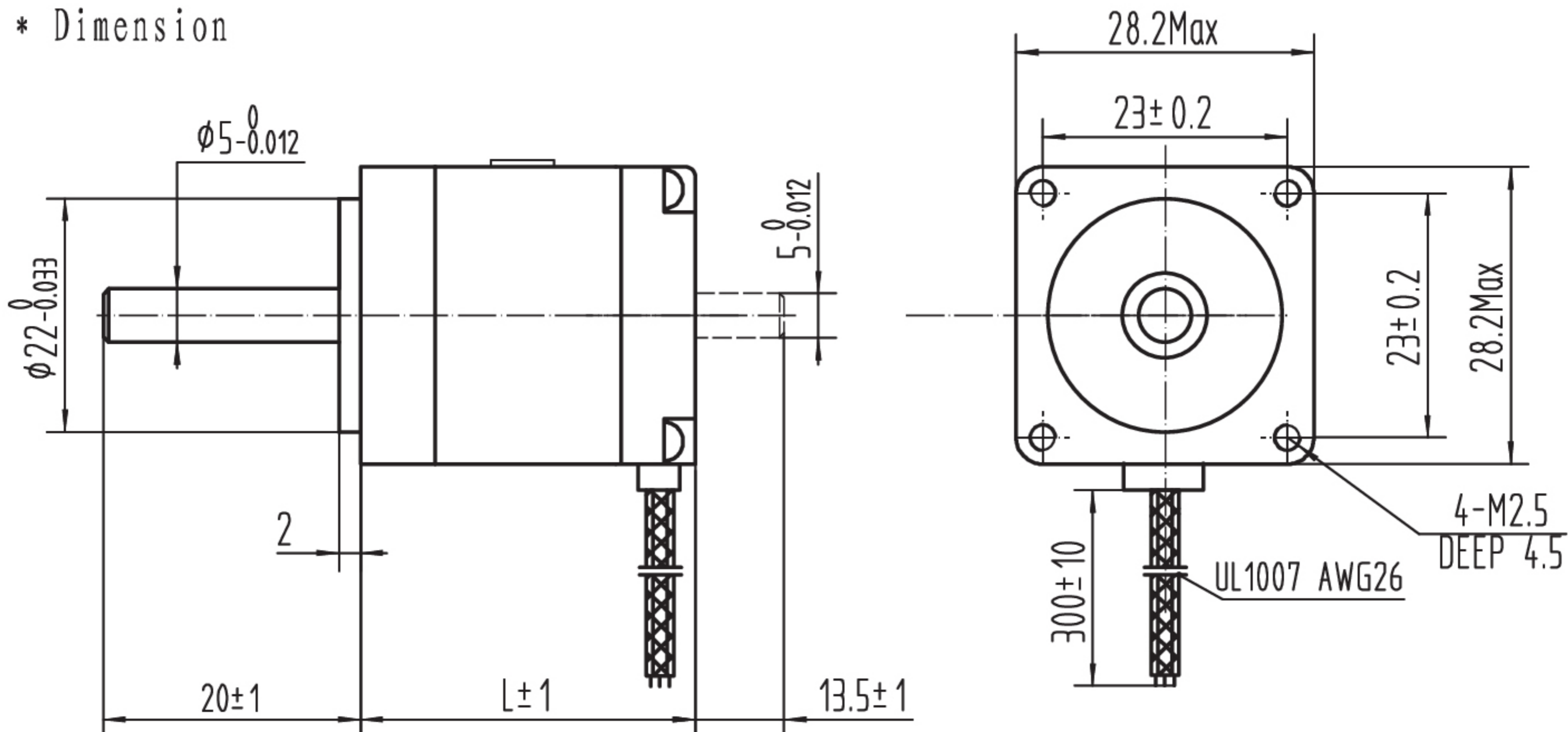
Step Angle	----	1.8°
Step Angle Accuracy	----	±5% (full step, no load)
Resistance Accuracy	----	±10%
Inductance Accuracy	----	±20%
Insulation Resistance	----	500VDC 100MΩMin
Dielectric Strength	----	500VAC 1 minute
Ambient Temperature	----	-20℃-- +50℃
Temperature Rise	----	80℃ Max (rated current)
Shaft Axial Play	----	0.08mm Max (450g load)
Shaft Radial Play	----	0.02mm Max (450g load)
Max Axial Force	----	10N
Max Radial Force	----	28N (20mm from the flange)
Insulation Class	----	B



* Specifications

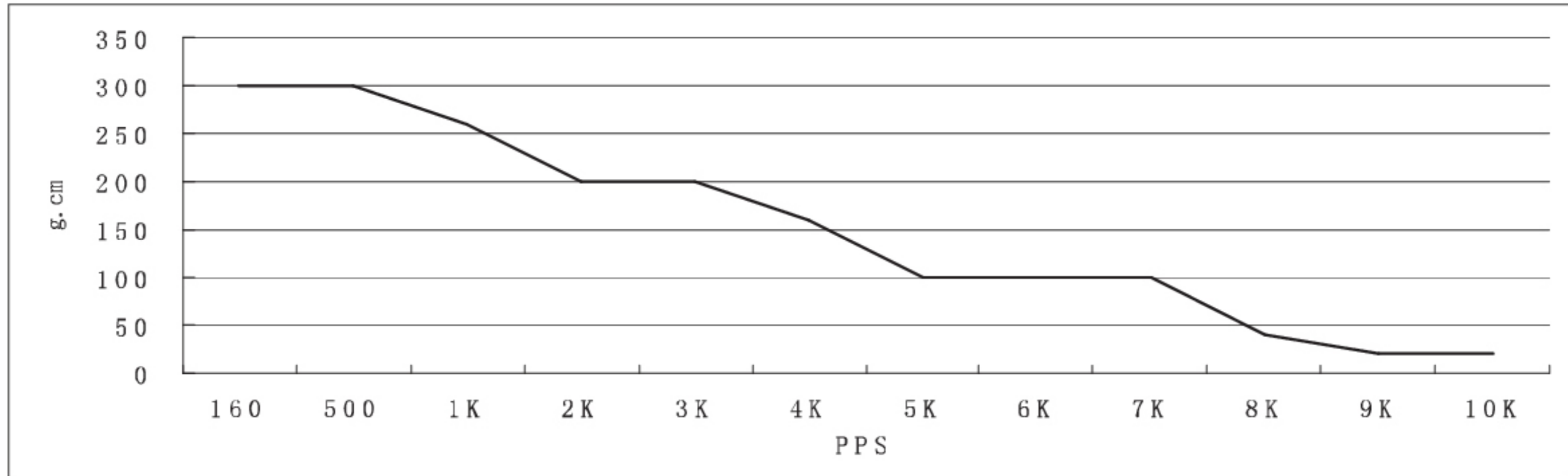
Model	Motor Codes	Voltage /Phase	Current /Phase	Resistance /Phase	Inductance /Phase	Holding Torque	NO. of Leads	Rotor Inertia	Weight	Length
Units		V	A	Ω	mH	g. cm		g. cm ²	Kg	mm
SY28STH32-0956A	020032000	2.75	0.95	2.9	0.9	430	6	9	0.11	31.5
SY28STH32-0674A	020032001	3.88	0.67	5.8	3.2	600	4			
SY28STH45-0956A	020045000	3.4	0.95	3.4	1.2	750	6	12	0.17	44.5
SY28STH45-0674A	020045001	4.56	0.67	6.8	4.9	950	4			
SY28STH51-0956A	020051000	4.4	0.95	4.6	1.8	900	6	18	0.2	50.5
SY28STH51-0674A	020051001	6.2	0.67	9.2	7.2	1200	4			

* Dimension

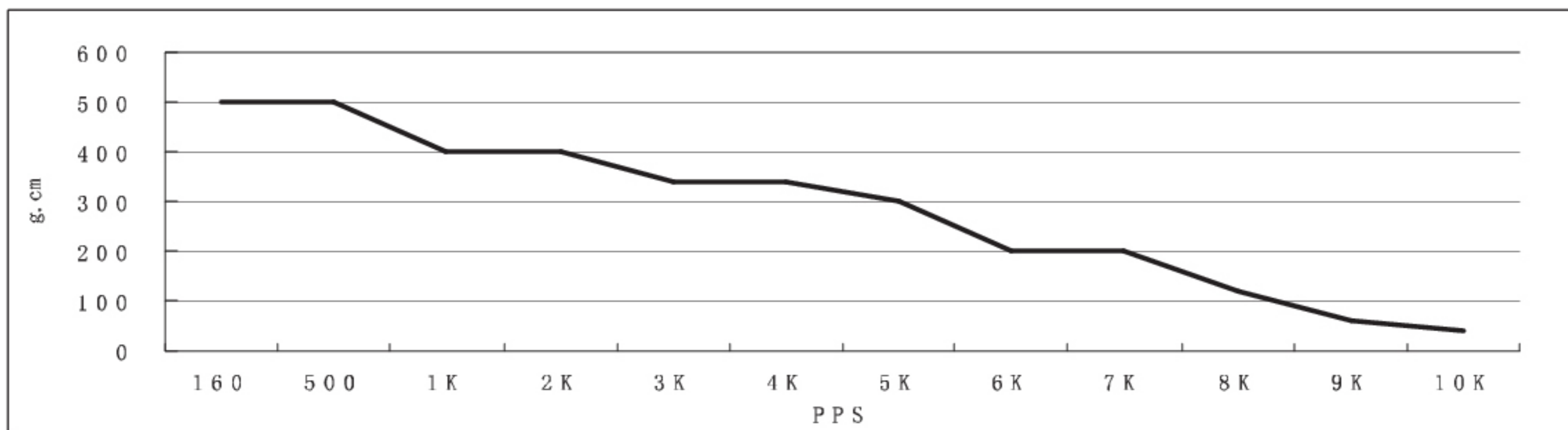


● Pull out torque curve:

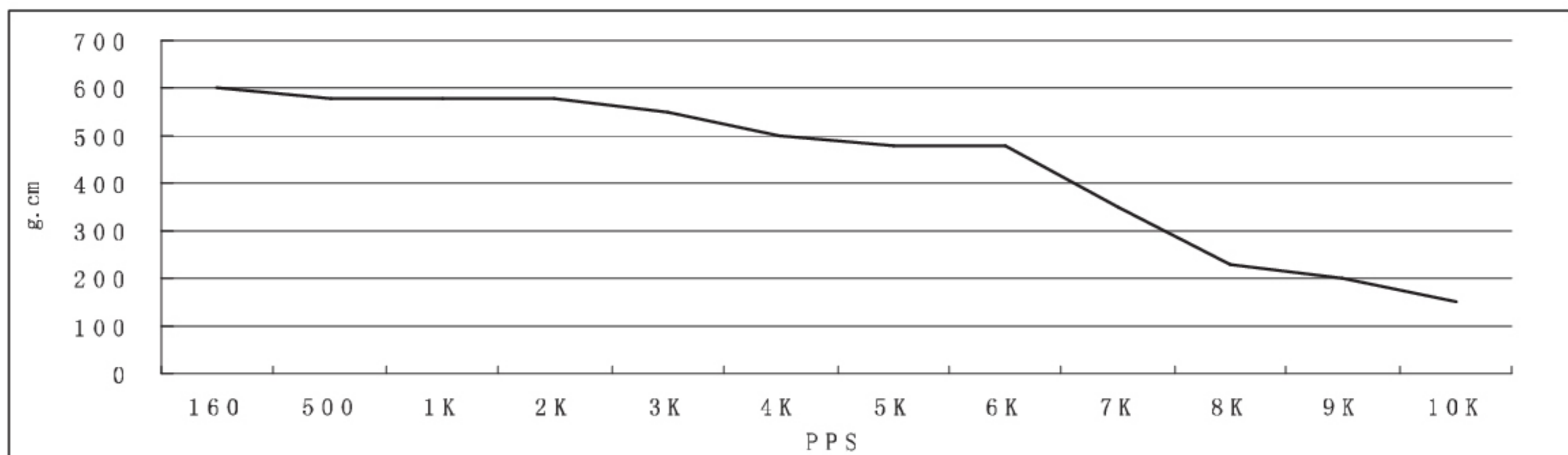
SY28STH30-0674A Pull out torque curve:
VOLTAGE: 24VDC, CONSTANT CURRENT: 0.67A, HALF STEP



SY28STH32-0956A Pull out torque curve:
VOLTAGE: 24VDC, CONSTANT CURRENT: 0.95A, HALF STEP

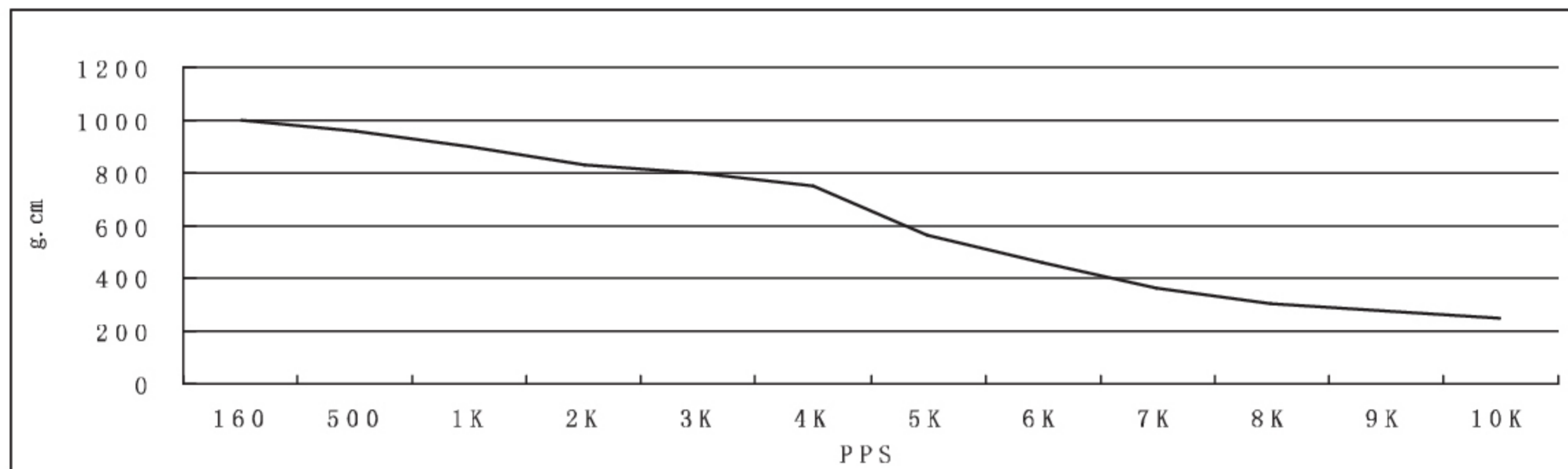


SY28STH45-0674A Pull out torque curve:
VOLTAGE: 24VDC, CONSTANT CURRENT: 0.67A, HALF STEP

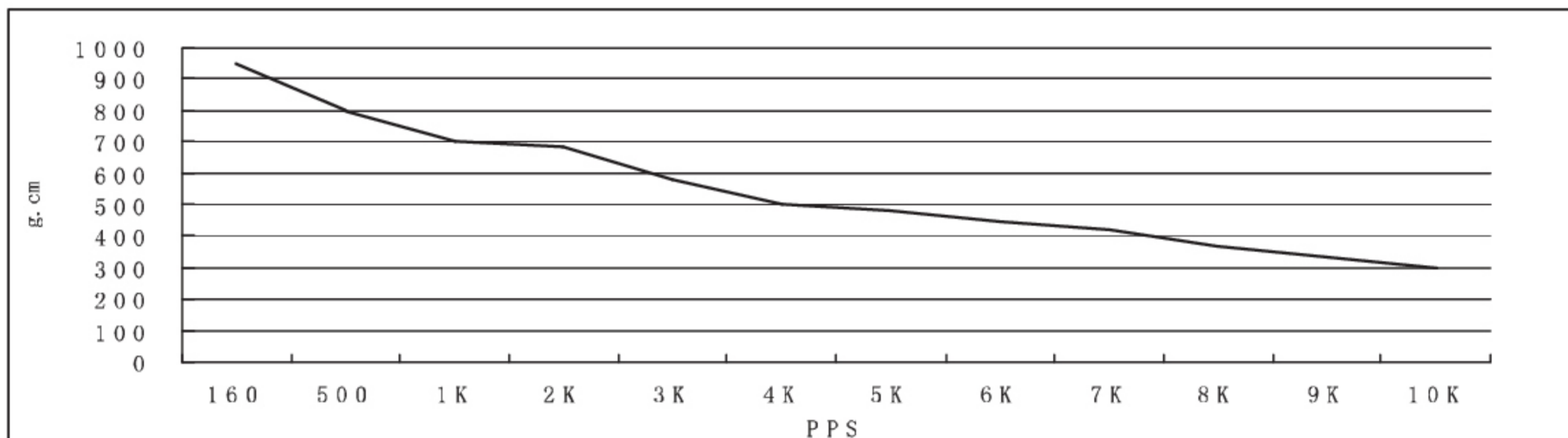


● Pull out torque curve:

SY28STH45-0956A Pull out torque curve:
VOLTAGE: 24VDC, CONSTANT CURRENT: 0.95A, HALF STEP



SY28STH51-0674A Pull out torque curve:
VOLTAGE: 24VDC, CONSTANT CURRENT: 0.67A, HALF STEP



SY28STH51-0956A Pull out torque curve:
VOLTAGE: 24VDC, CONSTANT CURRENT: 0.95A, HALF STEP

