

# 调速电动机 Speed Control Motors

**60W**

□90mm



## 规格Specs 连续额定Cont. Rated

型号Model · 类型Type 导线型Wire Type	最大 输出功率 Output Power W	电压 Voltage V	频率 Frequency Hz	调速范围 Speed Control Range r/min	容许转矩 Allowance Torque		启动转矩 Starting Torque mN.m	电流 Current A	电容器容量 Capacitor μF
					1200r/min mN.m	90r/min mN.m			
5IK60RGU-AFJ	60	1ph100	50	90~1400	460	140	265	2.00	20.0
			60	90~1700	490	160			
5IK60RGU-EFJ	60	1ph110 1ph120	60	90~1700	490	160	265	1.80	12.0
5IK60RGU-CFE	60	1ph220 1ph230	50	90~1400	490	140	265	0.80	4.0
5IK60RGU-HFE	60	1ph220 1ph230	60	90~1700	490	160	265	0.85	

- 电动机铭牌上的型号并无表示电容器种类的(J、E)记号。  
With the name on record on the motor nameplate, there is no capacitor types(J、E) marked.
- 各种安全规格以电动机铭牌上的型号取得认证。  
When the motor is approved under various safety standards, the model name on the nameplate is the approved model name.

## 种类/Type

### 电动机/Motor

机 型 Type	型 号Model
	导线型 Lead Wire Type

### 平行轴减速器(另售)/ Parallel Shaft Gearhead (Sold Separately)

减速器种类 Gearhead Type	减速器型号 Gearhead Model	减速比Gear Ratio
长寿命·低噪音 Long Life · Low Noise	5GU□K	3、3.6、5、6、7.5、9、 12.5、15、18、25、30、 36、50、60、75、90、 100、120、150、180、200
	5GU10XK (中间减速器Decimal gearhead)	

- 减速器型号的□中为减速比的数值  
Enter the gear ratio in the box (□) within the model name

## ② 装有减速器时的容许转矩

- 减速器·中间减速器另售。
- 减速器型号的□中为减速比的数值。
- 色表示与电动机同一方向运转，其他则为相反方向。
- 转速是以电动机的同步转速（50Hz:1500r/min、60Hz:1800r/min）为基准除以减速比而算出来的数值。实际转速将随负载大小变化而比所示数值减少2%~20%左右。
- 希望以大于下表的减速比进行进一步减速时，可在电动机与减速器之间安装减速比为10的中间减速器。这时的容许转矩为20N·m。

### Allowable Torque When Being With Reducer

- Gearheads and decimal gearheads are sold separately.
- Enter the gear ratio in the box(□) within the model name.
- Indicates the same rotating direction of the motor while the others rotate in the opposite direction.
- The speed is calculated by dividing the motor's synchronous speed(50Hz: 1500r/min、60Hz: 1800r/min) by the gear ratio. The actual speed is 2%~20% less than the displayed value, depending on the size of the load.
- To reduce the speed beyond the gear ratio in the table, attach a decimal gearhead(gear ratio:10)between the gearhead and motor. In that case, the permissible torque is 20N·m.

容许力矩单位 Allowance Torque Unit: 上段 upside (N.m) /下段 Belowside (kgf.cm)

类型Type 电动机 Motor 减速器 Gearhead	减速比 Gear Ratio	3	3.6	5	6	7.5	9	12.5	15	18	25	30	36	50	60	75	90	100	120	150	180	200	
																							转 速speed r/min
5IK60RGU-AFJ 5IK60RGU-EFJ 5IK60RGU-CFE 5IK60RGU-HFE	5GU□KB	50Hz	500	417	300	250	200	166	120	100	83	60	50	41	30	25	20	16	15	12.5	10	8.3	7.5
		60Hz	600	500	360	300	240	200	144	120	100	72	60	50	36	30	24	20	18	15	12	10	9
	5GU□KB	50Hz	1.1	1.4	1.9	2.3	2.9	3.4	4.8	5.7	6.8	8.6	10	10.3	12.4	15.5	18.6	20	20	20	20	20	20
			11.2	14.2	19.3	23.4	29.6	34.7	48.9	58.1	69.3	87.7	100	105	126	158	189	200	200	200	200	200	200
	5GU□KB	60Hz	0.92	1.1	1.5	1.8	2.3	2.8	3.8	4.6	5.5	6.9	8.3	8.3	10	12.5	15	18.8	20	20	20	20	20
			9.38	11.2	15.3	18.3	23.4	28.5	38.7	46.9	56.1	70.1	84.7	84.6	102	127	153	192	200	200	200	200	200

## ② 容许悬挂负载·容许轴向负载 Permissible Overhung Load and Thrust load

电动机（圆轴型）→201页 Motor(Round shaft type) →P201  
 减速器→201页 Gearhead→P201

## ② 减速器的容许负载惯性惯量J Permissible Load Inertia J of Gearhead

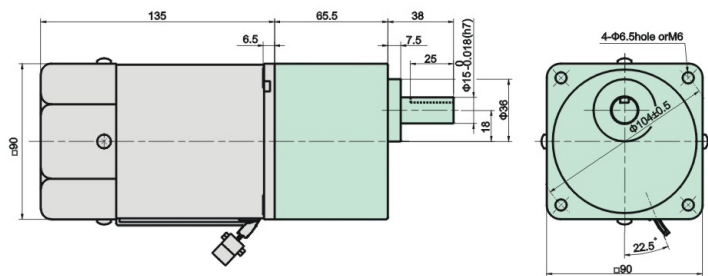
→201页 → P201

## ② 外形图(单位:mm)Dimensions(Unit:mm)

减速器附有安装用螺丝Mounting screws are included with gearhead.

### ◇ 导线型Lead Wire Type

重量Weight:电动机Motor:2.8kg 减速器Gearhead :1.5kg

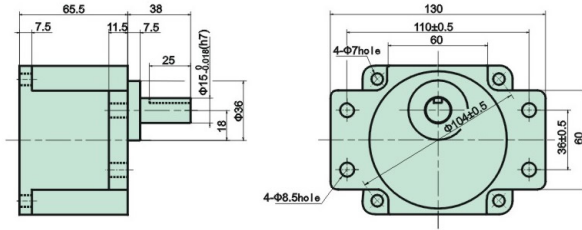


电动机型号 Motor Model	减速器型号 Gearhead Model	减速比 Gear Ratio	L1
5IK60RGU-AFJ 5IK60RGU-EFJ 5IK60RGU-CFE 5IK60RGU-HFE	5GU□KB	3~200	65.5

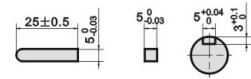
- 减速器型号的□中为减速比的数值  
 Enter the gear ratio in the box (□) within the model name

### ◇凸缘安装型减速器 Flange Mounting Reducer

可安装在GU齿轮轴型上  
Can be mounted on GU type gear shaft)  
5GU□K  
重量Weight:1.5kg

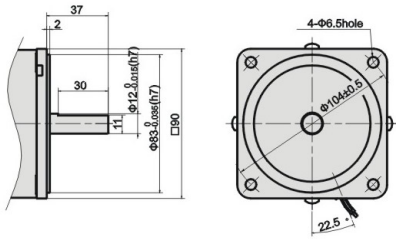


### ◇键·键槽(减速器附件)Key·Key Slot (The key is included with the gearhead)



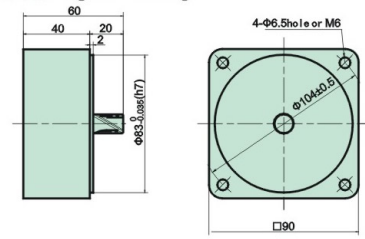
### ◇圆轴型的转轴部分 Shaft Section of Round Shaft Type

除重量及轴部外,电动机外形与齿轮轴型相同。  
Excluding weight and the shaft section  
Motor shape are the same as those of the pinion shaft



### ◇中间减速器 Decimal Gearhead

可安装在GU齿轮轴型上。  
Can be connected to GU pinion shaft type  
5GU10XK  
重量weight: 0.65kg



### ◇连接图 Connection Diagrams

