

调速电动机 Speed Control Motors

90W

□90mm



规格Specs 连续额定Cont. Rated

型号Model · 类型Type 导线型Wire Type		最大 输出功率 Output Power W	电压 Voltage V	频率 Frequency Hz	调速范围 Speed Control Range r/min	容许转矩 Allowance Torque		启动转矩 Starting Torque mN.m	电流 Current A	电容器容量 Capacitor μF
齿轮轴型 Pinion Shaft	圆轴型 Round Shaft					1200r/min mN.m	90r/min mN.m			
5IK90RGU-AFJ	5IK90RA-AFJ	90	1ph100	50	90~1400	710	230	405	2.75	25.0
				60	90~1700		260			
5IK90RGU-EFJ	5IK90RA-EFJ	90	1ph110	60	90~1700	710	260	410	2.60	20.0
			1ph120							
5IK90RGU-CFE	5IK90RA-CFE	90	1ph220	50	90~1400	710	230	410	1.20	5.0
			1ph230							
5IK90RGU-HFE	5IK90RA-HFE	90	1ph220	60	90~1700	710	260	410	1.25	
			1ph230							

- 电动机铭牌上的型号并无表示电容器种类的(J、E)记号。
With the name on record on the motor nameplate, there is no capacitor types(J、E) marked.
- 各种安全规格以电动机铭牌上的型号取得认证。
When the motor is approved under various safety standards, the model name on the nameplate is the approved model name.

种类/Type

电动机/Motor

机型 Type	型号Model	
	齿轮轴型 Pinion Shaft	圆轴型 Round Shaft
导线型 Lead Wire Type	5IK90RGU-AFJ	5IK90RA-AFJ
	5IK90RGU-EFJ	5IK90RA-EFJ
	5IK90RGU-CFE	5IK90RA-CFE
	5IK90RGU-HFE	5IK90RA-HFE

平行轴减速器(另售)/
Parallel Shaft Gearhead (Sold Separately)

减速器种类 Gearhead Type	减速器型号 Gearhead Model	减速比Gear Ratio
长寿命·低噪音 Long Life · Low Noise	5GU□K	3、3.6、5、6、7.5、9、 12.5、15、18、25、30、 36、50、60、75、90、 100、120、150、180、200
	5GU10XK (中间减速器Decimal gearhead)	

- 减速器型号的□中为减速比的数值
Enter the gear ratio in the box (□) within the model name

2 装有减速器时的容许转矩

- 减速器·中间减速器另售。
- 减速器型号的□中为减速比的数值。
- 色表示与电动机同一方向运转，其他则为相反方向。
- 转速是以电动机的同步转速（50Hz:1500r/min、60Hz:1800r/min）为基准除以减速比而算出来的数值。实际转速将随负载大小变化而比所示数值减少2%~20%左右。
- 希望以大于下表的减速比进行进一步减速时，可在电动机与减速器之间安装减速比为10的中间减速器。这时的容许转矩为20N·m。

Allowable Torque When Being With Reducer

- Gearheads and decimal gearheads are sold separately.
- Enter the gear ratio in the box(□) within the model name.
- Indicates the same rotating direction of the motor while the others rotate in the opposite direction.
- The speed is calculated by dividing the motor's synchronous speed(50Hz: 1500r/min、60Hz: 1800r/min) by the gear ratio. The actual speed is 2%~20% less than the displayed value, depending on the size of the load.
- To reduce the speed beyond the gear ratio in the table, attach a decimal gearhead(gear ratio:10)between the gearhead and motor. In that case, the permissible torque is 20N·m.

容许力矩单位 Allowance Torque Unit: 上段 upside (N.m) /下段 Belowside (kgf.cm)

类型Type 电动机 Motor 减速器 Gearhead	减速比 Gear Ratio		3	3.6	5	6	7.5	9	12.5	15	18	25	30	36	50	60	75	90	100	120	150	180	200	
	转 速speed r/min		50Hz	417	300	250	200	166	120	100	83	60	50	41	30	25	20	16	15	12.5	10	8.3	7.5	
5IK90RGU-AF□ J 5IK90RGU-EF□ J 5IK90RGU-CF□ E 5IK90RGU-HF□ E	5GU□KB	50Hz	1.7	20	2.8	3.4	4.3	5.1	6.4	7.7	9.2	11.6	13.6	16.6	20	20	20	20	20	20	20	20	20	20
		60Hz	600	500	360	300	240	200	144	120	100	72	60	50	36	30	24	20	18	15	12	10	9	9
		50Hz	17.3	20.4	28.6	34.7	43.9	52.0	65.3	78.6	93.3	118	139	169	200	200	200	200	200	200	200	200	200	200
		60Hz	14	1.7	2.5	2.8	3.5	4.2	5.2	6.2	7.5	9.4	11.3	13.5	18.8	20	20	20	20	20	20	20	10	20
			14.3	17.3	25.5	28.6	35.7	42.9	53.1	63.3	76.5	95.9	115	138	19.2	200	200	200	200	200	200	100	200	

2 容许悬挂负载·容许轴向负载 Permissible Overhung Load and Thrust load

电动机（圆轴型）→201页 Motor(Round shaft type)→P201

减速器→201页 Gearhead→P201

2 减速器的容许负载惯性惯量J Permissible Load Inertia J of Gearhead

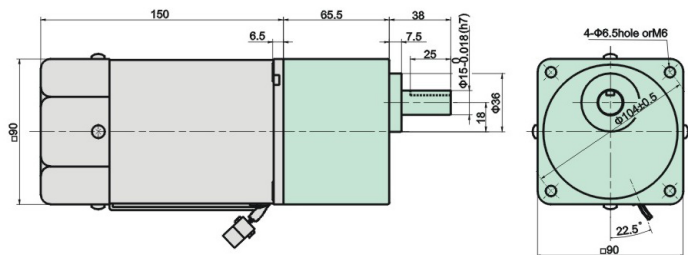
→201页 → P201

2 外形图(单位:mm)Dimensions(Unit:mm)

减速器附有安装用螺丝Mounting screws are included with gearhead.

◇导线型Lead Wire Type

重量Weight:电动机Motor:3.3kg 减速器Gearhead :1.5kg



电动机型号 Motor Model	减速器型号 Gearhead Model	减速比 Gear Ratio	L1
5IK90RGU-AFJ 5IK90RGU-EFJ 5IK90RGU-CFE 5IK90RGU-HFE	5GU□KB	3~200	65.5

- 减速器型号的□中为减速比的数值
Enter the gear ratio in the box (□) within the model name

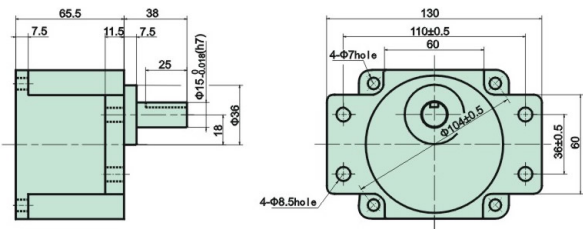
◇凸缘安装型减速器 Flange Mounting Reducer

可安装在GU齿轮轴线上

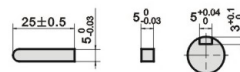
Can be mounted on GU type gear shaft)

5GU□K

重量Weight: 1.5kg



◇键·键槽(减速器附件)Key·Key Slot (The key is included with the gearhead)

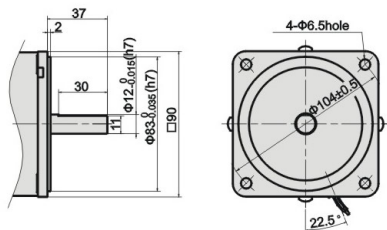


◇圆轴型的转轴部分 Shaft Section of Round Shaft Type

除重量及轴部外,电动机外形与齿轮轴型相同。

Excluding weight and the shaft section

Motor shape are the same as those of the pinion shaft

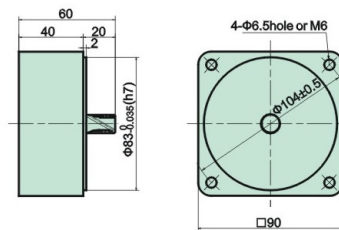


◇中间减速器 Decimal Gearhead

可安装在GU齿轮轴线上。

Can be connected to GU pinion shaft type 5GU10XK

重量weight: 0.65kg



连接图 Connection Diagrams

US型/US Type

SS型/SS Type

