

# 调速电动机 Speed Control Motors

**140W**

□104mm



## 规格Specs 连续额定Cont. Rated

型号Model · 类型Type 导线型Wire Type		最大 输出功率 Output Power W	电压 Voltage V	频率 Frequency Hz	调速范围 Speed Control Range r/min	容许转矩 Allowance Torque		启动转矩 Starting Torque mN.m	电流 Current A	电容器容量 Capacitor μF
齿轮轴型 Pinion Shaft	圆轴型 Round Shaft					1200r/min mN.m	90r/min mN.m			
6IK140RGU-AFJ	6IK140RA-AFJ	140	1ph100	50	90~1400	830	420	620	4.2	35
				60	90~1700					
6IK140RGU-EFJ	6IK140RA-EFJ	140	1ph110	60	90~1700	830	450	620	3.7	25
			1ph120							
6IK140RGU-CFE	6IK140RA-CFE	140	1ph220	50	90~1400	830	420	620	1.85	10
			1ph230							
6IK140RGU-HFE	6IK140RA-HFE	140	1ph220	60	90~1700	830	450	620	1.95	
			1ph230							

- 电动机铭牌上的型号并无表示电容器种类的(J、E)记号。  
With the name on record on the motor nameplate, there is no capacitor types(J、E) marked.
- 各种安全规格以电动机铭牌上的型号取得认证。  
When the motor is approved under various safety standards, the model name on the nameplate is the approved model name.

## 种类/Type

电动机/Motor

机型 Type	型号Model	
	齿轮轴型 Pinion Shaft	圆轴型 Round shaft
导线型 Lead Wire Type	6IK140RGU-AFJ	6IK140RA-AFJ
	6IK140RGU-EFJ	6IK140RA-EFJ
	6IK140RGU-CFE	6IK140RA-CFE
	6IK140RGU-HFE	6IK140RA-HFE

平行轴减速器(另售)/  
Parallel Shaft Gearhead (Sold Separately)

减速器种类 Gearhead Type	减速器型号 Gearhead Model	减速比Gear Ratio
长寿命 · 低噪音 Long Life · Low Noise	6GU□K	3、3.6、5、6、7.5、9、 12.5、15、18、25、30、 36、50、60、75、90、 100、120、150、180、200

- 减速器型号的□中为减速比的数值  
Enter the gear ratio in the box (□) within the model name

### ③ 装有减速器时的容许转矩

- 减速器·中间减速器另售。
- 减速器型号中的□中为减速比的数值。
- 色表示与电动机同一方向运转，其他则为相反方向。
- 转速是以电动机的同步转速（50Hz:1500r/min、60Hz:1800r/min）为基准除以减速比而算出来的数值。实际转速将随负载大小变化而比所示数值减少2%~20%左右。

### Allowable Torque When Being With Reducer

- Gearheads and decimal gearheads are sold separately.
- Enter the gear ratio in the box(□) within the model name.
- 色 Indicates the same rotating direction of the motor while the others rotate in the opposite direction.
- The speed is calculated by dividing the motor's synchronous speed(50Hz: 1500r/min、60Hz: 1800r/min) by the gear ratio. The actual speed is 2%~20% less than the displayed value, depending on the size of the load.

容许力矩单位 Allowance Torque Unit: 上段 upside (N.m) /下段 Belowside (kgf.cm)

类型Type 电动机 Motor 减速器 Gearhead	减速比 Gear Ratio		3	3.6	5	6	7.5	9	12.5	15	18	25	30	36	50	60	75	90	100	120	150	180	200
	转速speed r/min	50Hz	500	417	300	250	200	166	120	100	83	60	50	41	30	25	20	16	15	12	10	8	7.5
6IK140RGU-AFJ 6IK140RGU-EFJ 6IK140RGU-CFE 6IK140RGU-HFE	6GU□K	50Hz	2.6	3.1	4.4	5.2	6.6	7.9	9.9	11.8	14.2	17.8	21.4	25.7	35.6	40	40	40	40	40	40	40	40
		60Hz	26.5	31.6	44.8	53.0	67.3	80.6	101	120	144	181	218	262	263	400	400	400	400	400	400	400	400
	6GU□K	50Hz	2.1	2.5	3.5	4.2	5.3	6.3	7.9	9.5	11.4	14.4	17.2	20.7	28.7	34.5	40	40	40	40	40	40	40
		60Hz	21.4	25.5	35.7	42.8	54.0	64.2	80.6	96.9	116	147	175	211	292	352	400	400	400	400	400	400	400

### ③ 容许悬挂负载·容许轴向负载 Permissible Overhung Load and Thrust load

电动机（圆轴型）→201页 Motor(Round shaft type)→P201  
 减速器→201页 Gearhead→P201

### ③ 减速器的容许负载惯性惯量J Permissible Load Inertia J of Gearhead

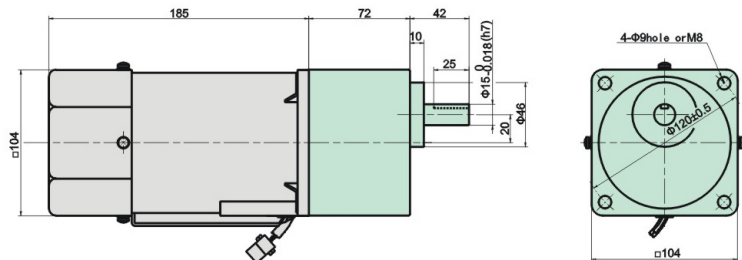
→201页 → P201

### ③ 外形图(单位:mm)Dimensions(Unit:mm)

减速器附有安装用螺丝Mounting screws are included with gearhead.

#### ◇ 导线型Lead Wire Type ①

重量Weight:电动机Motor:5.1kg 减速器Gearhead :2.1kg



电动机型号 Motor Model	减速器型号 Gearhead Model	减速比 Gear Ratio	L1
6IK140RGU-AFJ 6IK140RGU-EFJ 6IK140RGU-CFE 6IK140RGU-HFE	6GU□K	3~200	72

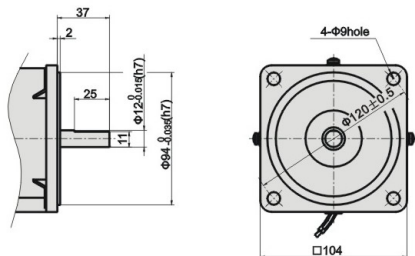
- 减速器型号的□中为减速比的数值  
 Enter the gear ratio in the box (□) within the model name

### ◇ 圆轴型的转轴部分 Shaft Section of Round Shaft Type

除重量及轴部外,电动机外形与齿轮轴型相同。

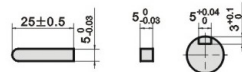
Excluding weight and the shaft section

Motor shape are the same as those of the pinion shaft



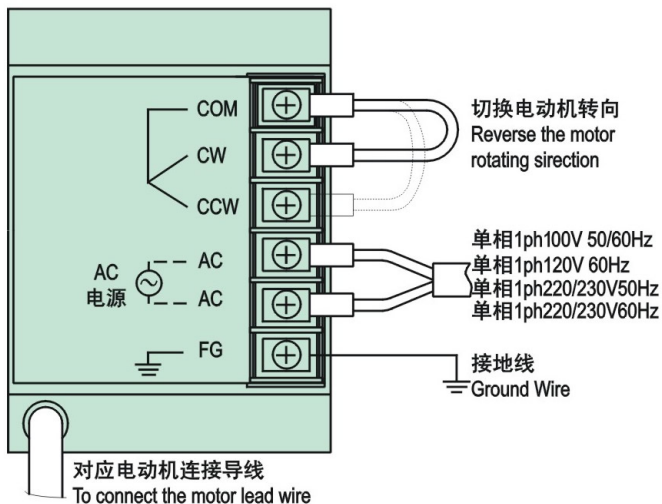
### ◇ 键·键槽(减速器附件)Key·Key Slot

(The key is included with the gearhead)



### 🔗 连接图 Connection Diagrams

#### US型/US Type



#### SS型/SS Type

