

调速电动机 Speed Control Motors

120W

□90mm



规格Specs 连续额定Cont. Rated

| 型号Model · 类型Type 导线型Wire Type | | 最大 输出功率 Output Power W | 电压 Voltage V | 频率 Frequency Hz | 调速范围 Speed Control Range r/min | 容许转矩 Allowance Torque | | 启动转矩 Starting Torque mN.m | 电流 Current A | 电容器容量 Capacitor μF |
|----------------------------------|--------------------|------------------------------------|--------------------|-----------------------|--|--------------------------|-----------------|------------------------------------|--------------------|--------------------------|
| 齿轮轴型 Pinion Shaft | 圆轴型 Round Shaft | | | | | 1200r/min mN.m | 90r/min mN.m | | | |
| 5IK120RGU-AFJ | 5IK120RA-AFJ | 120 | 1ph100 | 50 | 90~1400 | 750 | 330 | 530 | 3.50 | 30 |
| | | | | 60 | 90~1700 | | | | | |
| 5IK120RGU-EFJ | 5IK120RA-EFJ | 120 | 1ph110 1ph120 | 60 | 90~1700 | 750 | 360 | 530 | 3.25 | 25 |
| 5IK120RGU-CFE | 5IK120RA-CFE | | 1ph220 1ph230 | 50 | 90~1400 | | | | | |
| 5IK120RGU-HFE | 5IK120RA-HFE | 120 | 1ph220 1ph230 | 60 | 90~1700 | 750 | 360 | 530 | 1.50 | 7.0 |
| | | | | | | | | | | |

- 电动机铭牌上的型号并无表示电容器种类的(J、E)记号。

With the name on record on the motor nameplate, there is no capacitor types(J、E) marked.

- 各种安全规格以电动机铭牌上的型号取得认定。

When the motor is approved under various safety standards, the model name on the nameplate is the approved model name.

种类/Type

电动机/Motor

| 机 型 Type | 型 号Model | |
|-----------------------------|----------------------|--------------------|
| | 齿轮轴型 Pinion Shaft | 圆轴型 Round Shaft |
| 导线型 Lead Wire Type | 5IK120RGU-AFJ | 5IK120RA-AFJ |
| | 5IK120RGU-EFJ | 5IK120RA-EFJ |
| | 5IK120RGU-CFE | 5IK120RA-CFE |
| | 5IK120RGU-HFE | 5IK120RA-HFE |

平行轴减速器(另售)/

Parallel Shaft Gearhead (Sold Separately)

| 减速器种类 Gearhead Type | 减速器型号 Gearhead Model | 减速比Gear Ratio |
|---------------------------------------|---------------------------------|---|
| 长寿命 · 低噪音 Long Life · Low Noise | 5GU□K | 3、3.6、5、6、7.5、9、 12.5、15、18、25、30、 36、50、60、75、90、 100、120、150、180、200 |
| | 5GU10XK (中间减速器Decimal gearhead) | |

- 减速器型号的□中为减速比的数值

Enter the gear ratio in the box (□) within the model name

② 装有减速器时的容许转矩

- 减速器·中间减速器另售。
- 减速器型号的□中为减速比的数值。
- 色表示与电动机同一方向运转，其他则为相反方向。
- 转速是以电动机的同步转速（50Hz:1500r/min、60Hz:1800r/min）为基准除以减速比而算出来的数值。实际转速将随负载大小变化而比所示数值减少2%~20%左右。
- 希望以大于下表的减速比进行进一步减速时，可在电动机与减速器之间安装减速比为10的中间减速器。这时的容许转矩为20N·m。

Allowable Torque When Being With Reducer

- Gearheads and decimal gearheads are sold separately.
- Enter the gear ratio in the box(□) within the model name.
- Indicates the same rotating direction of the motor while the others rotate in the opposite direction.
- The speed is calculated by dividing the motor's synchronous speed(50Hz: 1500r/min、60Hz: 1800r/min) by the gear ratio. The actual speed is 2%~20% less than the displayed value, depending on the size of the load.
- To reduce the speed beyond the gear ratio in the table, attach a decimal gearhead(gear ratio:10)between the gearhead and motor. In that case, the permissible torque is 20N·m.

容许力矩单位 Allowance Torque Unit: 上段 upside (N.m) /下段 Belowside (kgf.cm)

| 类型Type 电动机 Motor 减速器 Gearhead | 减速比 Gear Ratio | | 3 | 3.6 | 5 | 6 | 7.5 | 9 | 12.5 | 15 | 18 | 25 | 30 | 36 | 50 | 60 | 75 | 90 | 100 | 120 | 150 | 180 | 200 | | |
|--|-------------------|------|------|------|------|------|------|------|------|------|------|------|------|------|-----|-----|-----|-----|-----|------|-----|-----|-----|-----|-----|
| | 转速speed r/min | 50Hz | 500 | 417 | 300 | 250 | 200 | 166 | 120 | 100 | 83 | 60 | 50 | 41 | 30 | 25 | 20 | 16 | 15 | 12.5 | 10 | 8.3 | 7.5 | | |
| 5IK120RGU-AFJ 5IK120RGU-EFJ 5IK120RGU-CFE 5IK120RGU-HFE | 5GU□KB | 50Hz | 2.3 | 2.7 | 3.8 | 4.5 | 5.6 | 6.8 | 8.5 | 10.2 | 12.2 | 15.3 | 18.4 | 20 | 20 | 20 | 20 | 20 | 20 | 20 | 20 | 20 | 20 | 20 | |
| | | 60Hz | 23.4 | 27.5 | 38.7 | 45.9 | 57.1 | 69.3 | 86.7 | 104 | 124 | 156 | 187 | 200 | 200 | 200 | 200 | 200 | 200 | 200 | 200 | 200 | 200 | 200 | 200 |
| | 5GU□KB | 50Hz | 1.8 | 2.2 | 3.0 | 3.6 | 4.6 | 5.5 | 6.8 | 8.2 | 9.8 | 12.4 | 14.9 | 17.8 | 20 | 20 | 20 | 20 | 20 | 20 | 20 | 20 | 20 | 20 | 20 |
| | | 60Hz | 18.3 | 22.4 | 30.6 | 36.7 | 46.9 | 56.1 | 69.5 | 83.6 | 100 | 126 | 152 | 181 | 200 | 200 | 200 | 200 | 200 | 200 | 200 | 200 | 200 | 200 | 200 |

② 容许悬挂负载·容许轴向负载 Permissible Overhung Load and Thrust load

电动机（圆轴型）→201页 Motor(Round shaft type) →P201
 减速器→201页 Gearhead→P201

② 减速器的容许负载惯性惯量J Permissible Load Inertia J of Gearhead

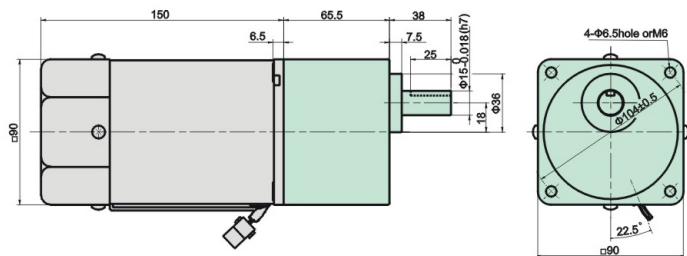
→201页 → P201

② 外形图(单位:mm)Dimensions(Unit:mm)

减速器附有安装用螺丝Mounting screws are included with gearhead.

◇ 导线型Lead Wire Type

重量Weight:电动机Motor:3.5kg 减速器Gearhead :1.5kg



| 电动机型号 Motor Model | 减速器型号 Gearhead Model | 减速比 Gear Ratio | L1 |
|--|-------------------------|-------------------|------|
| 5IK120RGU-AFJ 5IK120RGU-EFJ 5IK120RGU-CFE 5IK120RGU-HFE | 5GU□KB | 3~200 | 65.5 |

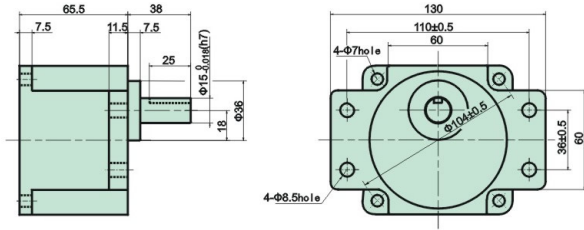
- 减速器型号的□中为减速比的数值
 Enter the gear ratio in the box (□) within the model name

◇凸缘安装型减速器Flange Mounting Reducer

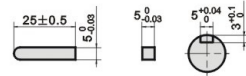
可安装在GU齿轮轴型上
Can be mounted on GU type gear shaft)

5GU□K

重量Weight:1.5kg



◇键·键槽(减速器附件)Key·Key Slot (The key is included with the gearhead)

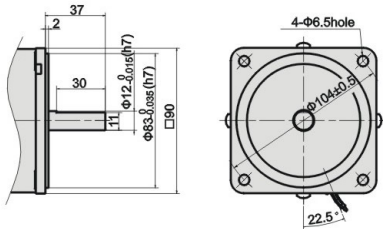


◇圆轴型的转轴部分Shaft Section of Round Shaft Type

除重量及轴部外,电动机外形与齿轮轴型相同。

Excluding weight and the shaft section

Motor shape are the same as those of the pinion shaft

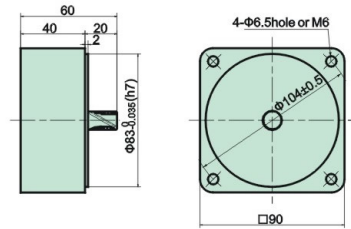


◇中间减速器 Decimal Gearhead

可安装在GU齿轮轴型上。

Can be connected to GU pinion shaft type
5GU10X

重量weight:0.65kg



◇连接图Connection Diagrams

US型/US Type

SS型/SS Type

