

感应电动机 INDUCTION MOTOR

60W

□90mm



规格 / 连续额定 SPECS / CONTINUOUS RATING

| 型号 Model 类型 Type | | 输出功率 Output power W | 电压 Voltage V | 频率 Frequency Hz | 电流 Current A | 启动转矩 Starting Torque mN.m | 额定转矩 Rated Torque mN.m | 额定转速 Rated Speed r/min | 电容器容量 Capacitor μF |
|--|---|---------------------------|--------------------|-----------------------|--------------------|---------------------------------|------------------------------|------------------------------|--------------------------|
| 导线型 Lead Wire Type 外形图 Drawing ① | 带端子箱型 Terminal Box Type 外形图 Drawing ② | | | | | | | | |
| 5IK60GU-AF | 5IK60GU-AFT | 60 | 1ph100 | 50 | 1.00 | 320 | 470 | 1250 | 20.0 |
| | | | | 60 | 1.10 | | | 1550 | |
| 5IK60GU-EF | 5IK60GU-EFT | 60 | 1ph110 1ph120 | 60 | 0.80 | 250 | 380 | 1550 | 12.0 |
| | | | | | 0.85 | | | | |
| 5IK60GU-CF | 5IK60GU-CFT | 60 | 1ph220 1ph230 | 50 | 0.50 | 340 | 470 | 1250 | 4.0 |
| | | | | | 0.55 | | | | |
| 5IK60GU-HF | 5IK60GU-HFT | 60 | 1ph220 1ph230 | 60 | 0.50 | 340 | 380 | 1550 | - |
| | | | | | 0.55 | | | | |
| 5IK60GU-SF | 5IK60GU-SFT | 60 | 3ph220 | 50 | 0.45 | 1000 | 470 | 1250 | - |
| | | | | 60 | 0.40 | | | 800 | |

● 各种安全规格以电动机铭牌上的型号取得认定。

● When the motor is approved under various safety standards, the model name on the nameplate is the approved model name.

种类 TYPE

● 电动机 MOTOR

| 机型 Type | 型号 Model |
|-----------------------------------|----------------------|
| | 齿轮轴型 Pinion Shaft |
| 导线型 Lead Wire Type | 5IK60GU-AF |
| | 5IK60GU-EF |
| | 5IK60GU-CF |
| | 5IK60GU-HF |
| | 5IK60GU-SF |
| 带端子 箱型 Terminal Box Type | 5IK60GU-AFT |
| | 5IK60GU-EFT |
| | 5IK60GU-CFT |
| | 5IK60GU-HFT |
| | 5IK60GU-SFT |

● 平行轴减速器(另售) PARALLEL SHAFT GEARHEAD (SOLD SEPARATELY)

| 减速器种类 Gearhead Type | 减速器型号 Gearhead Model | 减速比 Gear Ratio |
|----------------------------------|-----------------------------|---|
| 长寿命·低噪音 Long Life · Low Noise | 5GU□KB | 3、3.6、5、6、7.5、9、 12.5、15、18、25、30、 36、50、60、75、90、 100、120、150、180、200 |
| | 5GU10XK (中间减速器 Mid-gearbox) | |

● 减速器型号的□中为减速比的数值

● Enter the gear ratio in the box (□) within the model name

■ 装有减速器时的容许转矩

ALLOWABLE TORQUE WHEN BEING WITH GEARHEAD

- 减速器·中间减速器另售
- 电动机型号的□中为表示带端子箱型的记号 (T)
- 减速器型号的□中为减速比的数值。
- 色表示与电动机同一方向运转，其他则为相反方向。
- 转速是以电动机的同步转速 (50Hz: 1500r/min、60Hz: 1800r/min) 为基准除以减速比而算出来的数值。实际转速将随负载大小变化而比所示数值减少 2%~20%左右。
- 希望以大于下表的减速比进行进一步减速时，可在电动机与减速器之间安装减速比为10的中间减速器。这时的容许转矩为20N·m。
- Gearhead and mid-gearbox can be sold separately.
- Enter the code that represents the terminal box type (T) in the box (□) within the model name.
- Enter the gear ratio in the box (□) within the model name.
- The colored background indicates the same rotating direction of the motor while the rotating direction of others are opposite.
- The speed is calculated by dividing the motor's synchronous speed (50Hz: 1500r/min、60Hz: 1800r/min) by the gear ratio. The actual speed is 2%~20% less than the displayed value, depending on the size of the load.
- To reduce the speed beyond the gear ratio in the table, attach a mid-gearbox (gear ratio: 10) between the gearhead and motor. In that case, the permissible torque is 20N·m.

容许力矩单位 Allowance Torque Unit: 上段 Upside (N.m) /下段 Belowside (kgf.cm)

| 机型Type 电动机/减速器 Motor/Gearhead | 减速比Gear Ratio | | 3 | 3.6 | 5 | 6 | 7.5 | 9 | 12.5 | 15 | 18 | 25 | 30 | 36 | 50 | 60 | 75 | 90 | 100 | 120 | 150 | 180 | 200 | |
|-------------------------------------|------------------|------|------|------|------|------|------|------|------|------|------|------|------|------|------|------|------|------|------|------|------|------|------|------|
| | 转速Speed r/min | | 50Hz | 60Hz | 50Hz | 60Hz | 50Hz | 60Hz | 50Hz | 60Hz | 50Hz | 60Hz | 50Hz | 60Hz | 50Hz | 60Hz | 50Hz | 60Hz | 50Hz | 60Hz | 50Hz | 60Hz | 50Hz | 60Hz |
| 5IK60GU-AF□ | 5GU□KB | 50Hz | 1.1 | 1.4 | 1.9 | 2.3 | 2.9 | 3.4 | 4.3 | 5.1 | 6.2 | 7.8 | 9.3 | 11.2 | 15.5 | 18.6 | 20 | 20 | 20 | 20 | 20 | 20 | 20 | 20 |
| 5IK60GU-EF□ | | 60Hz | 11.2 | 14.2 | 19.3 | 23.4 | 29.6 | 34.7 | 43.8 | 52 | 63.3 | 79.6 | 94.9 | 114 | 158 | 190 | 200 | 200 | 200 | 200 | 200 | 200 | 200 | 200 |
| 5IK60GU-CF□ | | 60Hz | 0.92 | 1.1 | 1.5 | 1.8 | 2.3 | 2.8 | 3.5 | 4.2 | 5.0 | 6.3 | 7.5 | 9.0 | 12.5 | 15.0 | 18.8 | 20 | 20 | 20 | 20 | 20 | 20 | 20 |
| 5IK60GU-HF□ | | | 9.38 | 11.2 | 15.3 | 18.3 | 23.4 | 28.5 | 35.7 | 42.9 | 51 | 64.3 | 76.5 | 92.1 | 128 | 154 | 192 | 200 | 200 | 200 | 200 | 200 | 200 | 200 |
| 5IK60GU-SF□ | | | | | | | | | | | | | | | | | | | | | | | | |

■ 容许悬挂负载·容许轴向负载

PERMISSIBLE OVERHUNG LOAD AND THRUST LOAD

电动机 (圆轴型) →P217页
减速器→P217页

Motor (Round Shaft) →P217
Gearhead→P217

■ 减速器的容许负载惯性惯量J

PERMISSIBLE LOAD INERTIA J FOR GEARHEAD

→P218页

■ 外形图 (单位 mm)

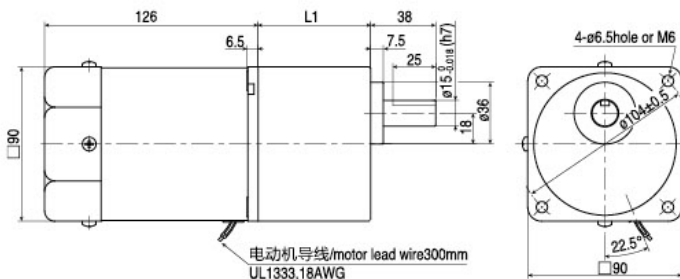
DIMENSIONS(Unit mm)

减速器附有安装用螺丝

Mounting screws are included with gearhead.

● 导线型 Lead wiring Type ①

重量 Weight: 电动机 Motor 2.7kg 减速器 Gearhead 1.5kg

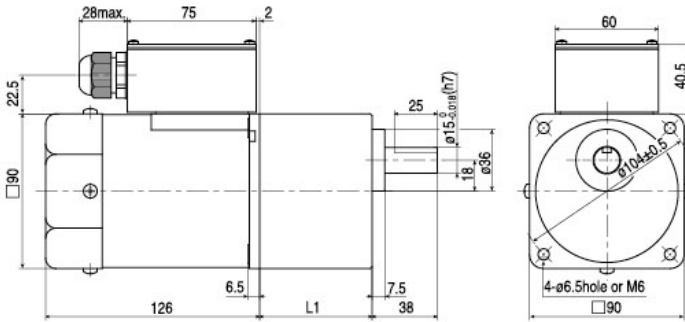


| 电动机型号 Motor Model | 减速器型号 Gearhead Model | 减速比 Gear Ratio | L1 |
|--|-------------------------|-------------------|------|
| 5IK60GU-AF 5IK60GU-EF 5IK60GU-CF 5IK60GU-HF 5IK60GU-SF | 5GU□KB | 3~200 | 65.5 |

- 减速器型号的□中为减速比的数值
- Enter the gear ratio in the box (□) within the model name

●带端子箱型Terminal Box Typ ②

重量 Weight: 电动机 Motor 2.85kg 减速器 Gearhead 1.5kg

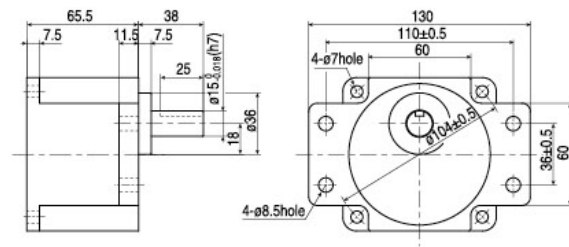


●凸缘安装型减速器Flange Mounting Reducer

可安装在GU齿轮轴型上

Can be Mounted on GU Type gear shaft 5GU□K

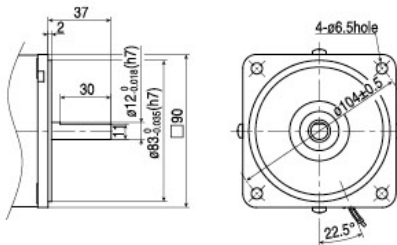
重量 Weight: 1.5kg



●圆轴型的转轴部分Shaft Section of Round Shaft Type

除重量及轴部外, 电动机外形与齿轮轴相同

Excluding weight and the shaft section Motor shape are the same as those of the pinion shaft type



●电容器外形尺寸 Formal Dimension of Capacitor

| 型号 Model | 电容器型号 Capacitor Model | L | W | H |
|----------------------|--------------------------|----|----|----|
| 齿轮轴型 Pinion Shaft | | | | |
| 5IK60GU-AF□ | ZD200CAUL | 47 | 23 | 35 |
| 5IK60GU-EF□ | ZD120CAUL | 47 | 17 | 31 |
| 5IK60GU-CF□ | ZD40BFAUL | 47 | 17 | 31 |

●常规电容器出线为引线, 也可根据客户要求配置插片式187#

●电动机型号的□中为表示带端子箱型的记号 (T)

●Note: Conventional capacitor is a lead wire type. Inserted 187# is optional

●Enter the code that represents the terminal box type (T) in the box (□) within the model name

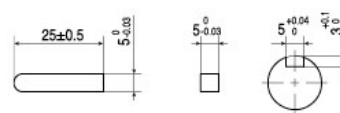
| 电动机型号 Motor Model | 减速器型号 Gearhead Model | 减速比 Gear Ratio | L1 |
|---|-------------------------|-------------------|------|
| 5IK60GU-AFT 5IK60GU-EFT 5IK60GU-CFT 5IK60GU-HFT 5IK60GU-SFT | 5GU□KB | 3~200 | 65.5 |

●减速器型号的□中为减速比的数值

●Enter the gear ratio in the box (□) within the model name

●键·键槽 (减速器附件)

Key·keyway (The key is included with the gearhead)

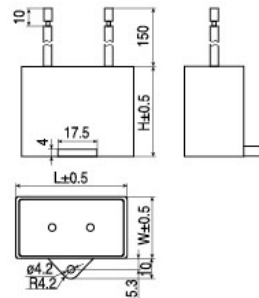
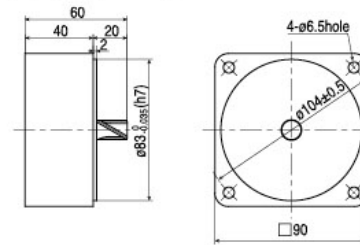


●中间减速器 Mid-gearbox

可安装在GU齿轮轴型上

Can be connected to GU pinion 5GU10XK

重量 Weight: 0.65kg



连接图 CONNECTION DIAGRAMS

- 运转方向指从电动机轴看来的方向。CW表示顺时针方向，CCW表示逆时针方向。
- 表中所记型号为齿轮轴型，圆轴型亦同。
- The direction of motor rotation is as viewed from the shaft end of motor.
CW represents the clockwise direction, while CCW represents the counterclockwise direction.
- Name indicated in the list is pinion shaft type, also valid for the equivalent round.

| 导线型 Lead Wire Type | | 带端子箱型 Terminal Box Type | |
|--|---|--|---|
| 5IK60GU-AF、5IK60GU-EF 5IK60GU-CF、5IK60GU-HF | 5IK60GU-SF | 5IK60GU-AFT、5IK60GU-EFT 5IK60GU-CFT、5IK60GU-HFT | 5IK60GU-SFT |
| <p>顺时针方向 CW</p> <p>逆时针方向 CCW</p> | <p>顺时针方向 CW</p> <p>逆时针方向 CCW</p> <p>若对换R、S、T中任意二条， 电动机作逆时针方向转动 To change the rotation direction change any two connections between R.S and T.</p> | <p>顺时针方向 CW</p> <p>逆时针方向 CCW</p> | <p>顺时针方向 CW</p> <p>逆时针方向 CCW</p> <p>若对换R、S、T中任意二条， 电动机作逆时针方向转动 To change the rotation direction change any two connections between R.S and T.</p> |

● 请注意 Note:

- 单相电动机运转方向的转换应在电动机停止后进行。
- 若在电动机运转时转换运转方向，可能发生无法转换运转方向或须费时较久的情况。
- Change the direction of single-phase motor rotation only after bring the motor to a stop.
- If an attempt is made to change the direction of rotation while the motor is rotating, motor may ignore reversing command or change its direction of rotation after some delay.