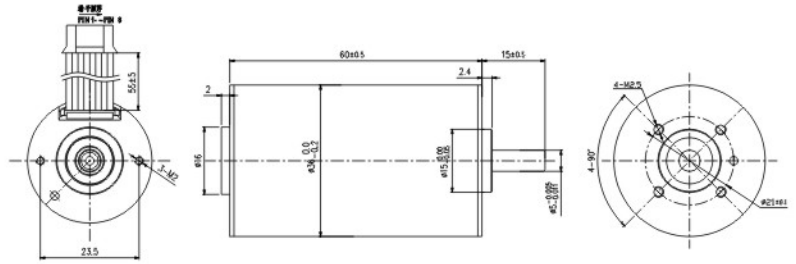
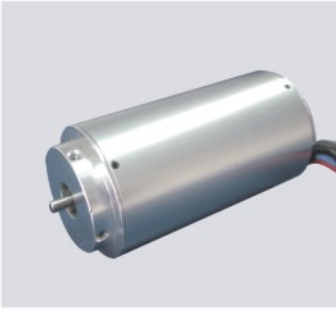


∅ 36mm Brushless



CB3660	UNIT	001	002	003	004
RATED VOLTAGE(额定电压)	V/DC	24	36		
RATED SPEED(额定转速)	RPM	5400	14800		
NO LOAD SPEED(空载转速)	RPM	7000	17500		
NO LOAD CURRENT(空载电流)	mA	230	320		
RATED CURRENT(额定电流)	mA	1500	3200		
RATED TORQUE(额定转矩)	mN.m	40	55		
RATED POWER(额定功率)	W	22.6	85.2		
MAX EFFICIENCY(最大效率)	%	70	80		
RESISTANCE PHASE TO PHASE	OHM	3.54	1.23		
TORQUE CONSTANT(转矩常数)	mN.m/A	32.7	19.6		
SPEED CONSTANT(速度常数)	rpm/V	291	486		
WEIGHT(重量)	g	315	315		

SPECIFICATION

AMBIENT TEMPERATURE RANGE	-20 ~ 55°C
MAX PERMISSIBLE WINDING TEMPERATURE	85°C
MAX PERMISSIBLE SPEED	25000rpm
MAX AXIAL LOAD	4.0N
MAX RADIAL LOADING	15N
NUMBER OF THE POLE PAIR	1
NUMBER OF THE PHASES	3

