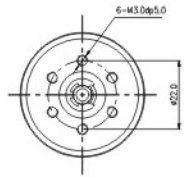
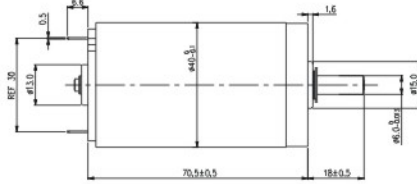
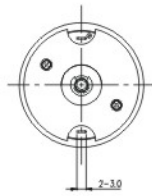
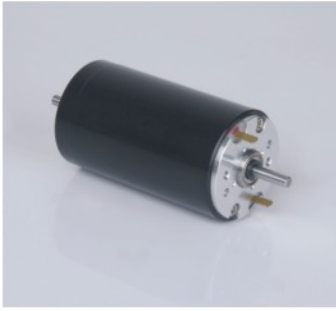


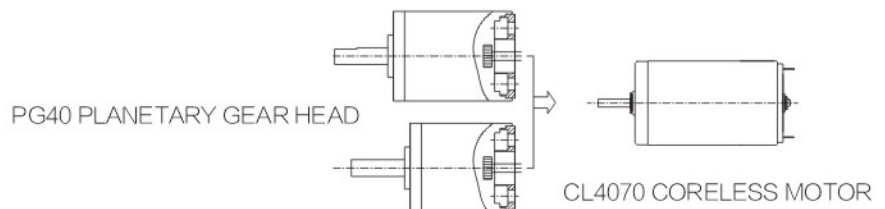
# ∅ 40mm Graphite Brushes



CL4070	UNIT	001	002	003	004
NOMINAL VOLTAGE(额定电压)	V/DC	24	48	48	
NO LOAD SPEED(空载转速)	rpm	7340	9200	7720	
RATED SPEED(额定转速)	rpm	6670	8720	6960	
NO LOAD CURRENT(空载电流)	mA	120	75	85	
RATED CURRENT(额定电流)	mA	5300	2020	3200	
RATED TORQUE(额定转矩)	mNm	166.6	98	186.2	
RATED POWER(额定功率)	W	116.4	89.5	135.7	
STALL CURRENT(堵转电流)	A	37	28.2	26.7	
STALL TORQUE(堵转转矩)	mNm	1825	1875	1890	
MAX. EFFICIENCY(最大效率)	%	81	78	79	
TERMINAL RESISTANCE(端子电阻)	Ω	0.6	1.7	1.8	
TORQUE CONSTANT(转矩常数)	mNm/A	49.3	66.5	70.8	
SPEED CONSTANT(速度常数)	rpm/V	306	192	161	
WEIGHT(重量)	g	350	350	350	

## SPECIFICATION

AMBIENT TEMPERATURE RANGE	-20 ~ 55°C
MAX PERMISSIBLE WINDING TEMPERATURE	125°C
MAX PERMISSIBLE SPEED	11000rpm
MAX AXIAL LOAD	6.5N
MAX RADIAL LOADING	35N
NUMBER OF THE POLE PAIR	1
NUMBER OF THE COMMUTATOR SEGMENTS	13



### Application

meat slicer (切肉机) etc